

For Research Use Only

# ORM2-Specific Monoclonal antibody, PBS Only



Catalog Number: 66217-1-PBS

## Basic Information

<b>Catalog Number:</b> 66217-1-PBS	<b>GenBank Accession Number:</b> BC015964	<b>Purification Method:</b> Protein A purification
<b>Size:</b> 1 mg/ml	<b>GeneID (NCBI):</b> 5005	<b>CloneNo.:</b> 4E9H10
<b>Source:</b> Mouse	<b>UNIPROT ID:</b> P19652	
<b>Isotype:</b> IgG1	<b>Full Name:</b> orosomucoid 2	
<b>Immunogen Catalog Number:</b> AG18984	<b>Calculated MW:</b> 24 kDa	
	<b>Observed MW:</b> 45 kDa	

## Applications

**Tested Applications:**  
WB, Indirect ELISA, IHC, IF

**Species Specificity:**  
human

## Background Information

ORM2, also named as AGP2 and OMD 2, belongs to the calycin superfamily and Lipocalin family. It functions as transport protein in the blood stream. ORM2 binds various hydrophobic ligands in the interior of its beta-barrel domain. It also binds synthetic drugs and influences their distribution and availability. ORM2 appears to function in modulating the activity of the immune system during the acute-phase reaction. ORM2 is one of the conserved endoplasmic reticulum membrane proteins which regulating lipid homeostasis and protein quality control. This antibody can specially recognize ORM2. It recognizes a band about 45 kDa in human plasma which may be due to the glycosylation of ORM2 or the dimer formation of the protein.

## Storage

**Storage:**  
Store at -80°C.  
**The product is shipped with ice packs. Upon receipt, store it immediately at -80°C**

**Storage Buffer:**  
PBS Only

For technical support and original validation data for this product please contact:

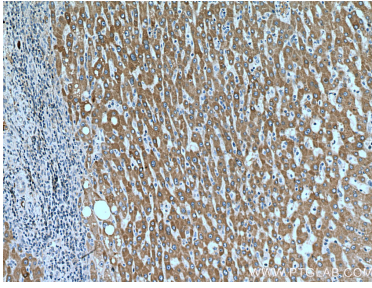
T: 4006900926

E: [Proteintech-CN@ptglab.com](mailto:Proteintech-CN@ptglab.com)

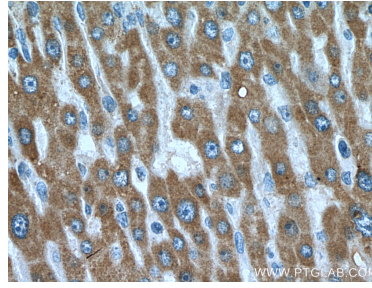
W: [ptgcn.com](http://ptgcn.com)

**This product is exclusively available under Proteintech Group brand and is not available to purchase from any other manufacturer.**

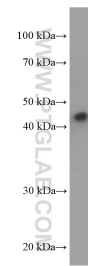
## Selected Validation Data



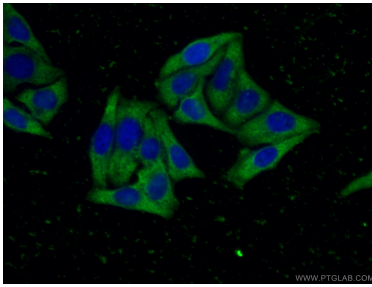
Immunohistochemical analysis of paraffin-embedded human liver cancer tissue slide using 66217-1-Ig (ORM2-Specific antibody) at dilution of 1:1000 (under 10x lens). Heat mediated antigen retrieval with Tris-EDTA buffer (pH 9.0). This data was developed using the same antibody clone with 66217-1-PBS in a different storage buffer formulation.



Immunohistochemical analysis of paraffin-embedded human liver cancer tissue slide using 66217-1-Ig (ORM2-Specific antibody) at dilution of 1:1000 (under 40x lens). Heat mediated antigen retrieval with Tris-EDTA buffer (pH 9.0). This data was developed using the same antibody clone with 66217-1-PBS in a different storage buffer formulation.



human plasma were subjected to SDS PAGE followed by western blot with 66217-1-Ig (ORM2-Specific antibody) at dilution of 1:1000 incubated at room temperature for 1.5 hours. This data was developed using the same antibody clone with 66217-1-PBS in a different storage buffer formulation.



Immunofluorescent analysis of (-20°C Ethanol) fixed HepG2 cells using 66217-1-Ig(ORM2-Specific antibody) at dilution of 1:100 and Alexa Fluor 488-conjugated AffiniPure Goat Anti-Mouse IgG(H+L). This data was developed using the same antibody clone with 66217-1-PBS in a different storage buffer formulation.