

For Research Use Only

# Pikachurin Monoclonal antibody, PBS Only



Catalog Number: 66232-1-PBS

## Basic Information

<b>Catalog Number:</b> 66232-1-PBS	<b>GenBank Accession Number:</b> BC033177	<b>Purification Method:</b> Protein A purification
<b>Size:</b> 1 mg/ml	<b>GeneID (NCBI):</b> 133584	<b>CloneNo.:</b> 1C6D12
<b>Source:</b> Mouse	<b>UNIPROT ID:</b> Q63HQ2	
<b>Isotype:</b> IgG1	<b>Full Name:</b> EGF-like, fibronectin type III and laminin G domains	
<b>Immunogen Catalog Number:</b> AG6362	<b>Calculated MW:</b> 111 kDa	
	<b>Observed MW:</b> 111 kDa, 55-60 kDa	

## Applications

**Tested Applications:**  
WB, Indirect ELISA, IF

**Species Specificity:**  
human

## Background Information

Pikachurin, also known as EGFLAM or FLJ39155, is an extracellular matrix-like retinal protein that has been found to localize in the synaptic cleft of the photoreceptor ribbon synapse (PMID: 18641643). Pikachurin is a dystroglycan-interacting protein and has an essential role in photoreceptor ribbon synapse formation. Pikachurin is a 1017-amino-acid protein with a calculated molecular weight of 111 kDa and high mRNA abundance in retina. This monoclonal antibody detects two bands of 111 kDa and 55-60 kDa. The lower-molecular-weight band has been reported and likely represents a fragment resulting from cleavage of Pikachurin (PMID: 23226524).

## Storage

**Storage:**  
Store at -80°C.  
**The product is shipped with ice packs. Upon receipt, store it immediately at -80°C**

**Storage Buffer:**  
PBS Only

For technical support and original validation data for this product please contact:

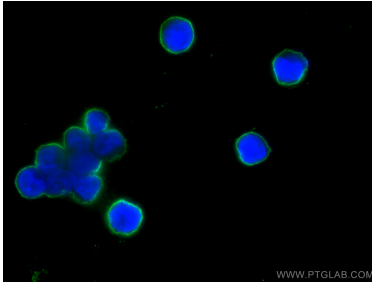
T: 4006900926

E: [Proteintech-CN@ptglab.com](mailto:Proteintech-CN@ptglab.com)

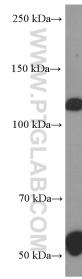
W: [ptgcn.com](http://ptgcn.com)

**This product is exclusively available under Proteintech Group brand and is not available to purchase from any other manufacturer.**

## Selected Validation Data



Immunofluorescent analysis of (4% PFA) fixed Y79 cells using Pikachurin antibody (66232-1-Ig, Clone: 1C6D12) at dilution of 1:400 and CoraLite®488-Conjugated AffiniPure Goat Anti-Mouse IgG(H+L). This data was developed using the same antibody clone with 66232-1-PBS in a different storage buffer formulation.



human retina tissue were subjected to SDS PAGE followed by western blot with 66232-1-Ig (Pikachurin antibody at dilution of 1:1000 incubated at room temperature for 1.5 hours. This data was developed using the same antibody clone with 66232-1-PBS in a different storage buffer formulation.