

For Research Use Only

# PHOX2B Monoclonal antibody, PBS Only



Catalog Number: 66254-1-PBS

## Basic Information

|   |  |   |
|---|--|---|
| <b>Catalog Number:</b><br>66254-1-PBS       | <b>GenBank Accession Number:</b><br>BC017199 | <b>Purification Method:</b><br>Protein A purification |
| <b>Size:</b><br>1 mg/ml                     | <b>GeneID (NCBI):</b><br>8929                | <b>CloneNo.:</b><br>1F5F5                             |
| <b>Source:</b><br>Mouse                     | <b>UNIPROT ID:</b><br>Q99453                 |   |
| <b>Isotype:</b><br>IgG2a                    | <b>Full Name:</b><br>paired-like homeobox 2b |   |
| <b>Immunogen Catalog Number:</b><br>AG13196 | <b>Calculated MW:</b><br>31 kDa              |   |
|   | <b>Observed MW:</b><br>32-36 kDa             |   |

## Applications

**Tested Applications:**  
WB, Indirect ELISA, IHC, IF

**Species Specificity:**  
human, mouse

## Background Information

Paired mesoderm homeobox protein 2B (PHOX2B), also named as Neuroblastoma Phox, is a 314 amino acid protein, which contains one homeobox DNA-binding domain and belongs to the paired homeobox family. PHOX2B localizes in the nucleus and is expressed in neuroblastoma, brain and adrenal gland. PHOX2B plays a role in the development of several major noradrenergic neuron populations, including the locus coeruleus. PHOX2B has an association with congenital central hypoventilation syndrome.

## Storage

**Storage:**  
Store at -80°C.  
**The product is shipped with ice packs. Upon receipt, store it immediately at -80°C**

**Storage Buffer:**  
PBS Only

For technical support and original validation data for this product please contact:

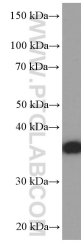
T: 4006900926

E: [Proteintech-CN@ptglab.com](mailto:Proteintech-CN@ptglab.com)

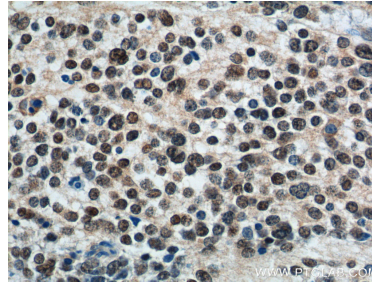
W: [ptgcn.com](http://ptgcn.com)

**This product is exclusively available under Proteintech Group brand and is not available to purchase from any other manufacturer.**

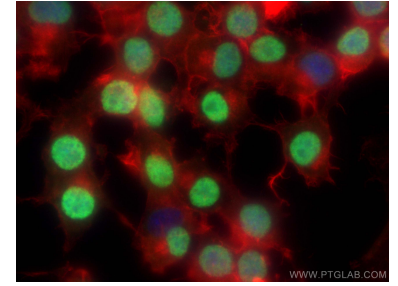
## Selected Validation Data



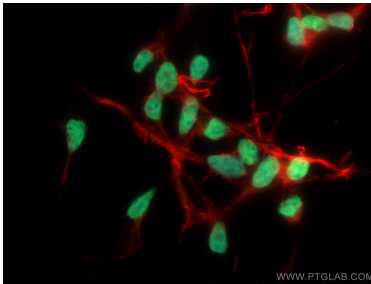
Neuro-2a cells were subjected to SDS PAGE followed by western blot with 66254-1-Ig (PHOX2B Antibody) at dilution of 1:2500 incubated at room temperature for 1.5 hours. This data was developed using the same antibody clone with 66254-1-PBS in a different storage buffer formulation.



Immunohistochemical analysis of paraffin-embedded neuroblastoma tissue slide using 66254-1-Ig (PHOX2B antibody) at dilution of 1:300 (under 40x lens). This data was developed using the same antibody clone with 66254-1-PBS in a different storage buffer formulation.



Immunofluorescent analysis of (4% PFA) fixed Neuro-2a cells using PHOX2B antibody (66254-1-Ig, Clone: 1F5F5 ) at dilution of 1:400 and CoraLite@488-Conjugated AffiniPure Goat Anti-Mouse IgG(H+L), CL594-phalloidin (red). This data was developed using the same antibody clone with 66254-1-PBS in a different storage buffer formulation.



Immunofluorescent analysis of (4% PFA) fixed SH-SY5Y cells using PHOX2B antibody (66254-1-Ig, Clone: 1F5F5 ) at dilution of 1:400 and CoraLite@488-Conjugated AffiniPure Goat Anti-Mouse IgG(H+L), CL594-phalloidin (red). This data was developed using the same antibody clone with 66254-1-PBS in a different storage buffer formulation.