

For Research Use Only

# SRPX2 Monoclonal antibody, PBS Only



Catalog Number: 66266-1-PBS

Featured Product

## Basic Information

Catalog Number:

66266-1-PBS

Size:

1 mg/ml

Source:

Mouse

Isotype:

IgG2b

Immunogen Catalog Number:

AG8084

GenBank Accession Number:

BC020733

GeneID (NCBI):

27286

UNIPROT ID:

O60687

Full Name:

sushi-repeat-containing protein, X-linked 2

Calculated MW:

465 aa, 53 kDa

Observed MW:

53 kDa

Purification Method:

Protein A purification

CloneNo.:

2A1D7

## Applications

Tested Applications:

WB, Indirect ELISA, IHC, IF

Species Specificity:

human, pig, mouse

## Background Information

SRPX2 (sushi-repeat-containing protein, X-linked 2) is a secreted protein expressed in neurons of the human adult brain, including the rolandic area (PMID: 20874700). Firstly described as sushi-repeat protein up-regulated in leukemia (SPRUL) in leukemia cells with dysregulated expression at the transcriptional level, SRPX2 has been recently shown as a multifunctional protein. SRPX2 is a ligand for uPAR, the urokinase-type plasminogen activator (uPA) receptor (PMID: 18718938). It is involved in seizure disorders, angiogenesis and cellular adhesion (PMID: 22242148; 19667118; 16497722). The involvement of SRPX2 in disorders of language cortex suggests it has an important role in the perisylvian region critical for language and cognitive development (PMID: 16497722).

## Storage

Storage:

Store at -80°C.

The product is shipped with ice packs. Upon receipt, store it immediately at -80°C

Storage Buffer:

PBS Only

For technical support and original validation data for this product please contact:

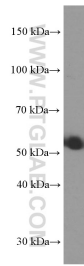
T: 4006900926

E: [Proteintech-CN@ptglab.com](mailto:Proteintech-CN@ptglab.com)

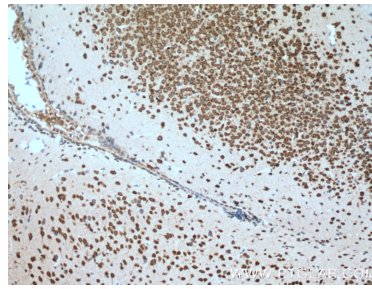
W: [ptgcn.com](http://ptgcn.com)

This product is exclusively available under Proteintech Group brand and is not available to purchase from any other manufacturer.

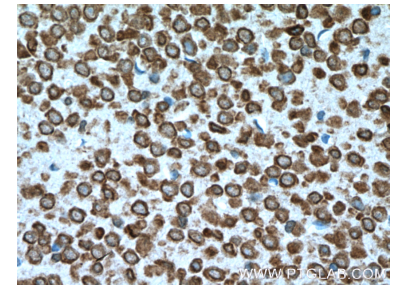
## Selected Validation Data



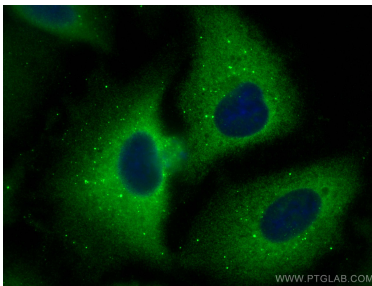
pig lung tissue were subjected to SDS PAGE followed by western blot with 66266-1-Ig (SRPX2 antibody) at dilution of 1:1000 incubated at room temperature for 1.5 hours. This data was developed using the same antibody clone with 66266-1-PBS in a different storage buffer formulation.



Immunohistochemical analysis of paraffin-embedded mouse brain tissue slide using 66266-1-Ig (SRPX2 Antibody) at dilution of 1:400 (under 10x lens). Heat mediated antigen retrieval with Tris-EDTA buffer (pH 9.0). This data was developed using the same antibody clone with 66266-1-PBS in a different storage buffer formulation.



Immunohistochemical analysis of paraffin-embedded mouse brain tissue slide using 66266-1-Ig (SRPX2 Antibody) at dilution of 1:400 (under 40x lens). Heat mediated antigen retrieval with Tris-EDTA buffer (pH 9.0). This data was developed using the same antibody clone with 66266-1-PBS in a different storage buffer formulation.



Immunofluorescent analysis of (-20°C Methanol) fixed A549 cells using SRPX2 antibody (66266-1-Ig, Clone: 2A1D7) at dilution of 1:400 and CoraLite®488-Conjugated AffiniPure Goat Anti-Mouse IgG(H+L). This data was developed using the same antibody clone with 66266-1-PBS in a different storage buffer formulation.