

For Research Use Only

# CLPP Monoclonal antibody, PBS Only



Catalog Number: 66271-1-PBS

Featured Product

## Basic Information

Catalog Number:

66271-1-PBS

Size:

1 mg/ml

Source:

Mouse

Isotype:

IgG3

Immunogen Catalog Number:

AG8420

GenBank Accession Number:

BC002956

GeneID (NCBI):

8192

UNIPROT ID:

Q16740

Full Name:

ClpP caseinolytic peptidase, ATP-dependent, proteolytic subunit homolog (E. coli)

Calculated MW:

30 kDa

Observed MW:

26 kDa, 30 kDa

Purification Method:

Protein G purification

CloneNo.:

2E1D9

## Applications

Tested Applications:

WB, Indirect ELISA, IHC

Species Specificity:

human, pig

## Background Information

CLPP is the putative ATP-dependent Clp protease proteolytic subunit and also named as endopeptidase Clp. It belongs to the peptidase S14 family. Clp cleaves peptides in various proteins in a process that requires ATP hydrolysis. It may be responsible for a fairly general and central housekeeping function rather than for the degradation of specific substrates. This protein has a transit peptide of 56 amino acid.

## Storage

Storage:

Store at -80°C.

Storage Buffer:

PBS Only

For technical support and original validation data for this product please contact:

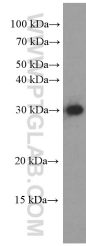
T: 4006900926

E: Proteintech-CN@ptglab.com

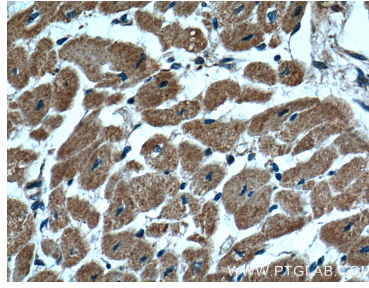
W: ptgcn.com

This product is exclusively available under Proteintech Group brand and is not available to purchase from any other manufacturer.

## Selected Validation Data



human heart tissue were subjected to SDS PAGE followed by western blot with 66271-1-Ig (CLPP Antibody) at dilution of 1:1000 incubated at room temperature for 1.5 hours. This data was developed using the same antibody clone with 66271-1-PBS in a different storage buffer formulation.



Immunohistochemical analysis of paraffin-embedded human heart tissue slide using 66271-1-Ig (CLPP Antibody) at dilution of 1:200 (under 40x lens). This data was developed using the same antibody clone with 66271-1-PBS in a different storage buffer formulation.