

For Research Use Only

# CLTCL1 Monoclonal antibody, PBS Only



Catalog Number: 66274-1-PBS

## Basic Information

<b>Catalog Number:</b> 66274-1-PBS	<b>GenBank Accession Number:</b> NM_007098	<b>Purification Method:</b> Protein A purification
<b>Size:</b> 1 mg/ml	<b>GeneID (NCBI):</b> 8218	<b>CloneNo.:</b> 1B5A10
<b>Source:</b> Mouse	<b>UNIPROT ID:</b> P53675	
<b>Isotype:</b> IgG2a	<b>Full Name:</b> clathrin, heavy chain-like 1	
	<b>Calculated MW:</b> 187 kDa	
	<b>Observed MW:</b> 180 kDa	

## Applications

**Tested Applications:**  
WB, Indirect ELISA, IHC, IF

**Species Specificity:**  
human

## Background Information

CLTCL1, also named as CLH22, CLTCL and CLTD, belongs to the clathrin heavy chain family. Clathrin is the major protein of the polyhedral coat of coated pits and vesicles. Two different adapter protein complexes link the clathrin lattice either to the plasma membrane or to the trans-Golgi network. The antibody is specific to CLTCL1. It has no cross reaction to CLTC.

## Storage

**Storage:**  
Store at -80°C.  
**The product is shipped with ice packs. Upon receipt, store it immediately at -80°C**

**Storage Buffer:**  
PBS Only

For technical support and original validation data for this product please contact:

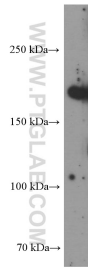
T: 4006900926

E: [Proteintech-CN@ptglab.com](mailto:Proteintech-CN@ptglab.com)

W: [ptgcn.com](http://ptgcn.com)

**This product is exclusively available under Proteintech Group brand and is not available to purchase from any other manufacturer.**

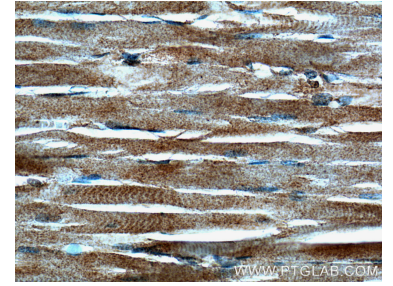
## Selected Validation Data



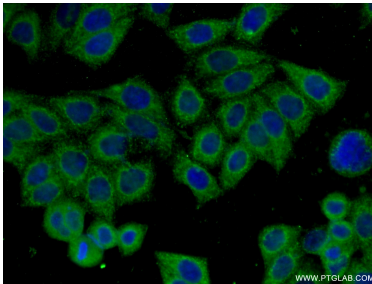
HeLa cells were subjected to SDS PAGE followed by western blot with 66274-1-Ig (CLTCL1 antibody) at dilution of 1:1000 incubated at room temperature for 1.5 hours. This data was developed using the same antibody clone with 66274-1-PBS in a different storage buffer formulation.



Immunohistochemical analysis of paraffin-embedded human skeletal muscle tissue slide using 66274-1-Ig (CLTCL1 antibody) at dilution of 1:200 (under 10x lens). This data was developed using the same antibody clone with 66274-1-PBS in a different storage buffer formulation.



Immunohistochemical analysis of paraffin-embedded human skeletal muscle tissue slide using 66274-1-Ig (CLTCL1 antibody) at dilution of 1:200 (under 40x lens). This data was developed using the same antibody clone with 66274-1-PBS in a different storage buffer formulation.



Immunofluorescent analysis of (-20°C Ethanol) fixed HeLa cells using 66274-1-Ig (CLTCL1 antibody) at dilution of 1:100 and Alexa Fluor 488-Conjugated AffiniPure Goat Anti-Mouse IgG(H+L). This data was developed using the same antibody clone with 66274-1-PBS in a different storage buffer formulation.