

For Research Use Only

SDCCAG8 Monoclonal antibody, PBS Only



Catalog Number: 66284-1-PBS

Basic Information

Catalog Number:

66284-1-PBS

Size:

1 mg/ml

Source:

Mouse

Isotype:

IgG2b

Immunogen Catalog Number:

AG4264

GenBank Accession Number:

BC032454

GeneID (NCBI):

10806

UNIPROT ID:

Q865Q7

Full Name:

serologically defined colon cancer antigen 8

Calculated MW:

713 aa, 83 kDa

Observed MW:

83 kDa

Purification Method:

Protein A purification

CloneNo.:

2H1A4

Applications

Tested Applications:

WB, Indirect ELISA, IHC

Species Specificity:

human

Background Information

SDCCAG8, also named as CCCAP and NY-CO-8, plays a role in the establishment of cell polarity and epithelial lumen formation. It may play a role in ciliogenesis. Loss of SDCCAG8 function as a cause of a retinal-renal ciliopathy and validates exome capture analysis for broadly heterogeneous single-gene disorders. SDCCAG8 is localized at both centrioles and interacts directly with OFD1 (oral-facial-digital syndrome 1), which is associated with NPHP-RC.

Storage

Storage:

Store at -80°C.

Storage Buffer:

PBS Only

For technical support and original validation data for this product please contact:

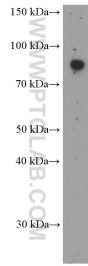
T: 4006900926

E: Proteintech-CN@ptglab.com

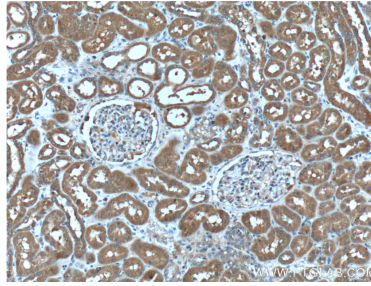
W: ptgcn.com

This product is exclusively available under Proteintech Group brand and is not available to purchase from any other manufacturer.

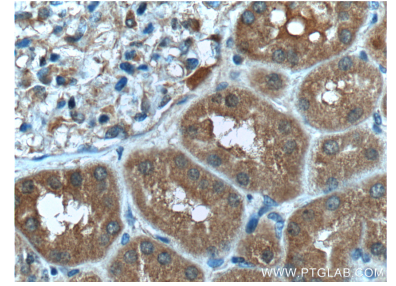
Selected Validation Data



HEK-293 cells were subjected to SDS PAGE followed by western blot with 66284-1-Ig (SDCCAG8 Antibody) at dilution of 1:1000 incubated at room temperature for 1.5 hours. This data was developed using the same antibody clone with 66284-1-PBS in a different storage buffer formulation.



Immunohistochemical analysis of paraffin-embedded human kidney tissue slide using 66284-1-Ig (SDCCAG8 Antibody) at dilution of 1:200 (under 10x lens). This data was developed using the same antibody clone with 66284-1-PBS in a different storage buffer formulation.



Immunohistochemical analysis of paraffin-embedded human kidney tissue slide using 66284-1-Ig (SDCCAG8 Antibody) at dilution of 1:200 (under 40x lens). This data was developed using the same antibody clone with 66284-1-PBS in a different storage buffer formulation.