

For Research Use Only

BDNF Monoclonal antibody, PBS Only



Catalog Number: 66292-1-PBS

Basic Information

Catalog Number: 66292-1-PBS	GenBank Accession Number: BC029795	Purification Method: Protein A purification
Size: 1 mg/ml	GeneID (NCBI): 627	CloneNo.: 1E5C5
Source: Mouse	UNIPROT ID: P23560	
Isotype: IgG2a	Full Name: brain-derived neurotrophic factor	
Immunogen Catalog Number: AG11329	Calculated MW: 247 aa, 28 kDa	
	Observed MW: 32 kDa	

Applications

Tested Applications:
WB, Indirect ELISA, IF

Species Specificity:
human

Background Information

BDNF is a member of the family of neurotrophic factors. It was first explored and purified from pig brain in 1982, and other members of the neurotrophin family were successively discovered. BDNF is induced by cortical neurons, and is necessary for survival of striatal neurons in the brain. Expression of BDNF is reduced in both Alzheimer's and Huntington disease patients. It also plays a role in the regulation of stress response and in the biology of mood disorders. The BDNF gene is rather complex in its structure and it can express five different mRNA isoforms by alternative splicing, producing 28-37 kDa proteins.

Storage

Storage:
Store at -80°C.

Storage Buffer:
PBS Only

For technical support and original validation data for this product please contact:

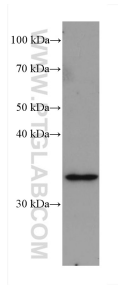
T: 4006900926

E: Proteintech-CN@ptglab.com

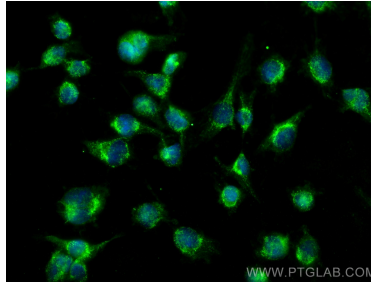
W: ptgcn.com

This product is exclusively available under Proteintech Group brand and is not available to purchase from any other manufacturer.

Selected Validation Data



U-251 cells were subjected to SDS PAGE followed by western blot with 66292-1-Ig (BDNF antibody) at dilution of 1:2000 incubated at room temperature for 1.5 hours. This data was developed using the same antibody clone with 66292-1-PBS in a different storage buffer formulation.



Immunofluorescent analysis of (-20°C Methanol) fixed U-251 cells using BDNF antibody (66292-1-Ig, Clone: 1E5C5) at dilution of 1:800 and CoraLite®488-Conjugated AffiniPure Goat Anti-Mouse IgG(H+L). This data was developed using the same antibody clone with 66292-1-PBS in a different storage buffer formulation.