

For Research Use Only

# CHCHD2 Monoclonal antibody, PBS Only



Catalog Number: 66302-1-PBS

Featured Product

## Basic Information

Catalog Number:

66302-1-PBS

Size:

1 mg/ml

Source:

Mouse

Isotype:

IgG1

Immunogen Catalog Number:

AG24219

GenBank Accession Number:

BC003079

GeneID (NCBI):

51142

UNIPROT ID:

Q9Y6H1

Full Name:

coiled-coil-helix-coiled-coil-helix domain containing 2

Calculated MW:

151 aa, 16 kDa

Observed MW:

17 kDa

Purification Method:

Protein A purification

CloneNo.:

2G1G10

## Applications

Tested Applications:

WB, Indirect ELISA, IHC, IF

Species Specificity:

human, pig, rat

## Background Information

CHCHD2 is a widely expressed 16.7-kDa mitochondrion-localized protein. CHCHD2 contains a C-terminal CHCH (coiled-coil helix coiled-coil helix) domain. Mutations in CHCHD2 gene have been reported in autosomal dominant Parkinson's disease (ADPD). CHCHD2 is a bi-organelle mediator of oxidative phosphorylation, playing crucial roles in regulating electron flow in the mitochondrial electron transport chain and acting as a nuclear transcription factor for a cytochrome c oxidase subunit (COX4I2) and itself in response to hypoxic stress. CHCHD2 also regulates cell migration and differentiation, mitochondrial cristae structure, and apoptosis (PMID: 33967741).

## Storage

Storage:

Store at -80°C.

The product is shipped with ice packs. Upon receipt, store it immediately at -80°C

Storage Buffer:

PBS Only

For technical support and original validation data for this product please contact:

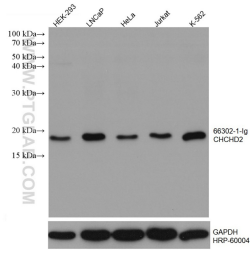
T: 4006900926

E: [Proteintech-CN@ptglab.com](mailto:Proteintech-CN@ptglab.com)

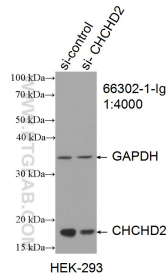
W: [ptgcn.com](http://ptgcn.com)

This product is exclusively available under Proteintech Group brand and is not available to purchase from any other manufacturer.

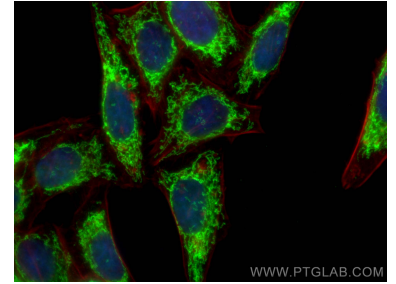
## Selected Validation Data



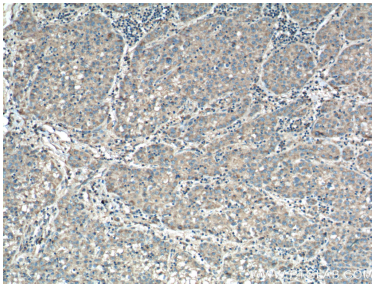
Various lysates were subjected to SDS PAGE followed by western blot with 66302-1-Ig (CHCHD2 antibody) at dilution of 1:10000 incubated at room temperature for 1.5 hours. The membrane was stripped and reblotted with HRP-conjugated GAPDH Monoclonal antibody (HRP-60004) as loading control. This data was developed using the same antibody clone with 66302-1-PBS in a different storage buffer formulation.



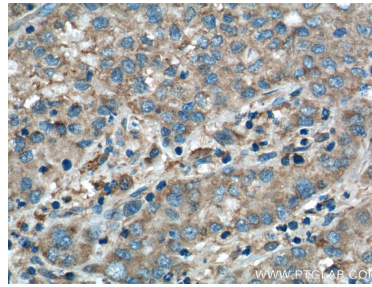
WB result of CHCHD2 antibody (66302-1-Ig; 1:4000; incubated at room temperature for 1.5 hours) with sh-Control and sh-CHCHD2 transfected HEK-293 cells. This data was developed using the same antibody clone with 66302-1-PBS in a different storage buffer formulation.



Immunofluorescent analysis of (4% PFA) fixed HepG2 cells using CHCHD2 antibody (66302-1-Ig, Clone: 2G1G10) at dilution of 1:3000 and CoraLite®488-Conjugated AffiniPure Goat Anti-Mouse IgG(H+L), CL594-Phalloidin (red). This data was developed using the same antibody clone with 66302-1-PBS in a different storage buffer formulation.



Immunohistochemical analysis of paraffin-embedded human liver cancer tissue slide using 66302-1-Ig (CHCHD2 Antibody) at dilution of 1:200 (under 10x lens). Heat mediated antigen retrieval with Tris-EDTA buffer (pH 9.0). This data was developed using the same antibody clone with 66302-1-PBS in a different storage buffer formulation.



Immunohistochemical analysis of paraffin-embedded human liver cancer tissue slide using 66302-1-Ig (CHCHD2 Antibody) at dilution of 1:200 (under 40x lens). Heat mediated antigen retrieval with Tris-EDTA buffer (pH 9.0). This data was developed using the same antibody clone with 66302-1-PBS in a different storage buffer formulation.