

For Research Use Only

TBL2 Monoclonal antibody, PBS Only

Catalog Number: 66307-1-PBS



Basic Information

Catalog Number: 66307-1-PBS	GenBank Accession Number: BC012938	Purification Method: Thiophilic affinity chromatograph
Size: 1 mg/ml	GeneID (NCBI): 26608	CloneNo.: 1D5C2
Source: Mouse	UNIPROT ID: Q9Y4P3	
Isotype: IgA	Full Name: transducin (beta)-like 2	
Immunogen Catalog Number: AG24225	Calculated MW: 446 aa, 50 kDa	
	Observed MW: 50 kDa	

Applications

Tested Applications:
WB, Indirect ELISA, IHC

Species Specificity:
human

Background Information

TBL2 belongs to a member of the beta-transducin protein family. This gene is commonly deleted in Williams-Beuren syndrome, a developmental disorder with multi-system manifestations caused by haploinsufficiency for contiguous genes deleted in chromosome region 7q11.23. TBL2 encodes a protein with four putative WD40 repeats, which may be involved in some intracellular signaling pathway.

Storage

Storage:
Store at -80°C.
The product is shipped with ice packs. Upon receipt, store it immediately at -80°C

Storage Buffer:
PBS Only

For technical support and original validation data for this product please contact:

T: 4006900926

E: Proteintech-CN@ptglab.com

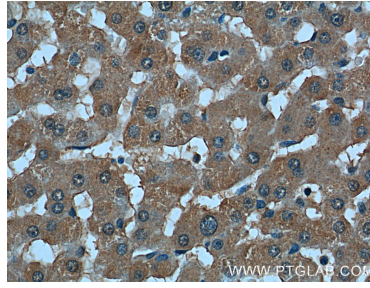
W: ptgcn.com

This product is exclusively available under Proteintech Group brand and is not available to purchase from any other manufacturer.

Selected Validation Data



MCF-7 cells were subjected to SDS PAGE followed by western blot with 66307-1-Ig (TBL2 Antibody) at dilution of 1:2000 incubated at room temperature for 1.5 hours. This data was developed using the same antibody clone with 66307-1-PBS in a different storage buffer formulation.



Immunohistochemical analysis of paraffin-embedded human liver tissue slide using 66307-1-Ig (TBL2 Antibody) at dilution of 1:200 (under 40x lens). This data was developed using the same antibody clone with 66307-1-PBS in a different storage buffer formulation.