

For Research Use Only

# Integrin Beta 1 Monoclonal antibody, PBS Only



Catalog Number: 66315-1-PBS

## Basic Information

Catalog Number:

66315-1-PBS

Size:

1 mg/ml

Source:

Mouse

Isotype:

IgG1

Immunogen Catalog Number:

AG24476

GenBank Accession Number:

BC020057

GeneID (NCBI):

3688

ENSEMBL Gene ID:

ENSG00000150093

UNIPROT ID:

P05556

Full Name:

integrin, beta 1 (fibronectin receptor,  
beta polypeptide, antigen CD29  
includes MDF2, MSK12)

Calculated MW:

88 kDa

Observed MW:

130 kDa

Purification Method:

Protein G purification

CloneNo.:

1A7C9

## Applications

Tested Applications:

WB, Indirect ELISA

Species Specificity:

human

## Background Information

Integrin beta-1 (ITGB1), also named as CD29, is a 130 kDa single chain type I glycoprotein that is expressed in a heterodimeric complex with one of six distinct  $\alpha$  subunits, comprising the very late activation antigen (VLA) subfamily of adhesion receptors. It is one of the essential surface molecules expressed on human MSC from bone marrow and other sources. The  $\beta$  1 subunit is also broadly expressed on lymphocytes and monocytes, weakly expressed on granulocytes, and not expressed on erythrocytes. These receptors are involved in a variety of cell-cell and cell-matrix interactions.

## Storage

Storage:

Store at -80°C.

Storage Buffer:

PBS Only

For technical support and original validation data for this product please contact:

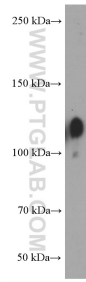
T: 4006900926

E: [Proteintech-CN@ptglab.com](mailto:Proteintech-CN@ptglab.com)

W: [ptgcn.com](http://ptgcn.com)

This product is exclusively available under Proteintech Group brand and is not available to purchase from any other manufacturer.

## Selected Validation Data



HT-1080 cells were subjected to SDS PAGE followed by western blot with 66315-1-Ig (Integrin beta-1 Antibody) at dilution of 1:8000 incubated at room temperature for 1.5 hours. This data was developed using the same antibody clone with 66315-1-PBS in a different storage buffer formulation.