

For Research Use Only

Dermatopontin Monoclonal antibody, PBS Only



Catalog Number: 66348-1-PBS

Basic Information

Catalog Number: 66348-1-PBS	GenBank Accession Number: BC033736	Purification Method: Protein A purification
Size: 1 mg/ml	GeneID (NCBI): 1805	CloneNo.: 4B1A12
Source: Mouse	UNIPROT ID: Q07507	
Isotype: IgG2b	Full Name: dermatopontin	
Immunogen Catalog Number: AG6200	Calculated MW: 22 kDa	
	Observed MW: 26 kDa	

Applications

Tested Applications:
WB, Indirect ELISA, IF

Species Specificity:
human, rat

Background Information

DPT (dermatopontin) is an extracellular matrix protein belonging to the dermatopontin family. Skin appears to be the richest source of dermatopontin, comprising about 15 mg/kg of the wet weight. Expression of dermatopontin is not limited to connective tissue, as investigations show that dermatopontin mRNA is expressed in cultured fibroblasts, muscle, heart, pancreas, and lung. Dermatopontin comprises a considerable proportion of the noncollagenous extracellular matrix proteins. It is involved in promotion of cellular adhesion, extracellular matrix assembly, wound healing, and positive modification of the inhibition activity of TGF-beta1.

Storage

Storage:
Store at -80°C.
The product is shipped with ice packs. Upon receipt, store it immediately at -80°C

Storage Buffer:
PBS Only

For technical support and original validation data for this product please contact:

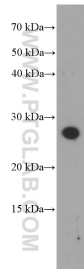
T: 4006900926

E: Proteintech-CN@ptglab.com

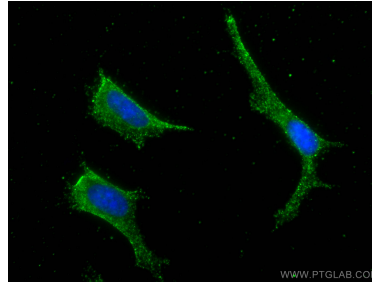
W: ptgcn.com

This product is exclusively available under Proteintech Group brand and is not available to purchase from any other manufacturer.

Selected Validation Data



rat skin tissue were subjected to SDS PAGE followed by western blot with 66348-1-Ig (Dermato pontin antibody at dilution of 1:1000 incubated at room temperature for 1.5 hours. This data was developed using the same antibody clone with 66348-1-PBS in a different storage buffer formulation.



Immunofluorescent analysis of (-20°C Ethanol) fixed SH-SY5Y cells using Dermato pontin antibody (66348-1-Ig, Clone: 4B1A12) at dilution of 1:800 and CoraLite®488-Conjugated AffiniPure Goat Anti-Mouse IgG(H+L). This data was developed using the same antibody clone with 66348-1-PBS in a different storage buffer formulation.