

For Research Use Only

# Mouse IgG2a isotype control Monoclonal antibody, PBS Only



Catalog Number: 66360-2-PBS

## Basic Information

Catalog Number:

66360-2-PBS

Size:

1 mg/ml

Source:

Mouse

Isotype:

IgG2a

GenBank Accession Number:

GeneID (NCBI):

Full Name:

Purification Method:

Protein A purification

CloneNo.:

11A1B2

## Applications

Tested Applications:

WB, FC, ELISA

Species Specificity:

Megathura crenulata

## Background Information

This antibody is used as the isotype control of mouse IgG2a. It can be used as the isotype control in Flow Cytometry, Immuno-Precipitation and other experiments. The immunogen of this antibody is Keyhole Limpet Hemocyanin (KLH).

## Storage

Storage:

Store at -20°C. Stable for one year after shipment.

Storage Buffer:

PBS only

Aliquoting is unnecessary for -20°C storage

For technical support and original validation data for this product please contact:

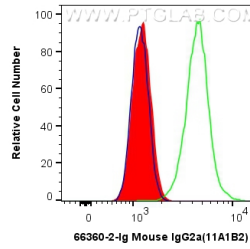
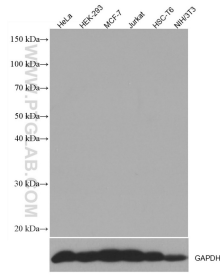
T: 4006900926

E: [Proteintech-CN@ptglab.com](mailto:Proteintech-CN@ptglab.com)

W: [ptgcn.com](http://ptgcn.com)

This product is exclusively available under Proteintech Group brand and is not available to purchase from any other manufacturer.

## Selected Validation Data



Various lysates (50  $\mu$ g/lane) were subjected to SDS PAGE followed by western blot with 66360-2-Ig (Mouse IgG2a isotype control antibody) at dilution of 1:1000 incubated at room temperature for 1.5 hours. This data was developed using the same antibody clone with 66360-2-PBS in a different storage buffer formulation.

1X10<sup>6</sup> HepG2 cells were intracellularly stained with 0.4  $\mu$ g Anti-Mouse IgG2a isotype control (66360-2-Ig, Clone: 11A1B2) and CoraLite<sup>®</sup>488-Conjugated AffiniPure Goat Anti-Mouse IgG(H+L) at dilution 1:1000 (red), or 0.4  $\mu$ g Cytochrome c Mouse McAb (66264-1-Ig, Clone: 2D8D11) (green) or unstained (blue). Cells were fixed with 4% PFA and permeabilized with Flow Cytometry Perm Buffer (PF00011-C). This data was developed using the same antibody clone with 66360-2-