

For Research Use Only

# Cardiac Troponin I Monoclonal antibody, PBS Only (Capture)

Catalog Number: 66376-2-PBS



## Basic Information

Catalog Number: 66376-2-PBS	GenBank Accession Number: BC096165	Purification Method: Protein A purification
Size: 1 mg/ml	GeneID (NCBI): 7137	CloneNo.: 1C5E8
Source: Mouse	UNIPROT ID: P19429	
Isotype: IgG2b	Full Name: troponin I type 3 (cardiac)	
Immunogen Catalog Number: AG16758	Calculated MW: 210 aa, 24 kDa	

## Applications

**Tested Applications:**  
Cytometric bead array, Indirect ELISA, Sample test

**Species Specificity:**  
human

## Background Information

### Storage

**Storage:**  
Store at -80°C.  
**The product is shipped with ice packs. Upon receipt, store it immediately at -80°C**

**Storage Buffer:**  
PBS Only

For technical support and original validation data for this product please contact:

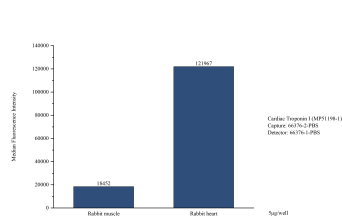
T: 4006900926

E: [Proteintech-CN@ptglab.com](mailto:Proteintech-CN@ptglab.com)

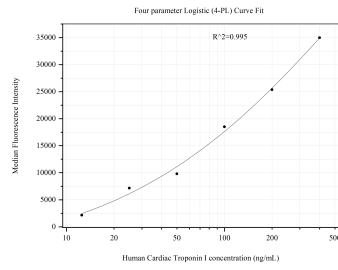
W: [ptgcn.com](http://ptgcn.com)

**This product is exclusively available under Proteintech Group brand and is not available to purchase from any other manufacturer.**

## Selected Validation Data



Cytometric bead array in cell lysate using MP51198-1, Cardiac Troponin I Monoclonal Matched Antibody Pair, PBS Only. Capture antibody: 66376-2-PBS. Detection antibody: 66376-1-PBS. Cell lysate: Rabbit muscle, Rabbit heart.



Cytometric bead array standard curve of MP51198-1, Cardiac Troponin I Monoclonal Matched Antibody Pair, PBS Only. Capture antibody: 66376-2-PBS. Detection antibody: 66376-1-PBS. Standard: Ag16758. Range: 12.5-400 ng/mL.