

For Research Use Only

Occludin Monoclonal antibody, PBS Only



Catalog Number: 66378-1-PBS

Featured Product

Basic Information

Catalog Number:

66378-1-PBS

Size:

1 mg/ml

Source:

Mouse

Isotype:

IgG1

Immunogen Catalog Number:

AG4057

GenBank Accession Number:

BC029886

GeneID (NCBI):

4950

UNIPROT ID:

Q16625

Full Name:

occludin

Calculated MW:

522 aa, 59 kDa

Observed MW:

59 kDa

Purification Method:

Protein G purification

CloneNo.:

1D3C4

Applications

Tested Applications:

WB, Indirect ELISA, IHC, IF

Species Specificity:

human, mouse, rat, pig

Background Information

Occludin is an integral membrane protein located at the tight junction. It is a tetraspanin protein with four transmembrane domains, intracellular N and C termini and two extracellular loops. Occludin plays a role in the formation and regulation of the tight junction paracellular permeability barrier. Occludin can exist in different isoforms, owing to modifications at the posttranscriptional and posttranslational levels, the monomeric occludin migrates as 53-65 kDa on SDS-PAGE (PMID: 22083955; 19457074).

Storage

Storage:

Store at -80°C.

The product is shipped with ice packs. Upon receipt, store it immediately at -80°C

Storage Buffer:

PBS Only

For technical support and original validation data for this product please contact:

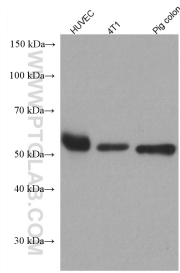
T: 4006900926

E: Proteintech-CN@ptglab.com

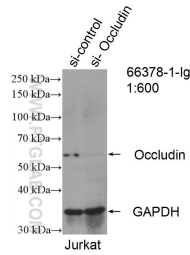
W: ptgcn.com

This product is exclusively available under Proteintech Group brand and is not available to purchase from any other manufacturer.

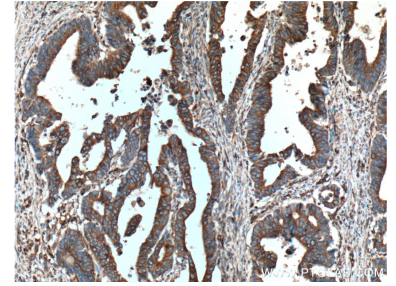
Selected Validation Data



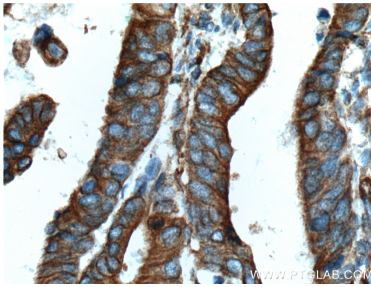
Various lysates were subjected to SDS PAGE followed by western blot with 66378-1-Ig (Occludin antibody) at dilution of 1:10000 incubated at room temperature for 1.5 hours. This data was developed using the same antibody clone with 66378-1-PBS in a different storage buffer formulation.



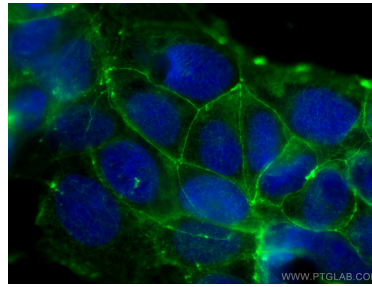
WB result of Occludin antibody (66378-1-Ig; 1:600; incubated at room temperature for 1.5 hours) with sh-Control and sh-Occludin transfected Jurkat cells. This data was developed using the same antibody clone with 66378-1-PBS in a different storage buffer formulation.



Immunohistochemical analysis of paraffin-embedded human colon cancer tissue slide using 66378-1-Ig (Occludin antibody) at dilution of 1:400 (under 10x lens. Heat mediated antigen retrieval with Tris-EDTA buffer (pH 9.0). This data was developed using the same antibody clone with 66378-1-PBS in a different storage buffer formulation.



Immunohistochemical analysis of paraffin-embedded human colon cancer tissue slide using 66378-1-Ig (Occludin antibody) at dilution of 1:400 (under 40x lens. Heat mediated antigen retrieval with Tris-EDTA buffer (pH 9.0). This data was developed using the same antibody clone with 66378-1-PBS in a different storage buffer formulation.



Immunofluorescent analysis of (-20°C Ethanol) fixed Caco-2 cells using Occludin antibody (66378-1-Ig, Clone: 1D3C4) at dilution of 1:1600 and Coralite@488-Conjugated AffiniPure Goat Anti-Mouse IgG(H+L). This data was developed using the same antibody clone with 66378-1-PBS in a different storage buffer formulation.