

For Research Use Only

SLCO1B3/OATP1B3 Monoclonal antibody, PBS Only



Catalog Number: 66381-1-PBS

Basic Information

Catalog Number:

66381-1-PBS

Size:

1 mg/ml

Source:

Mouse

Isotype:

IgG1

Immunogen Catalog Number:

AG19033

GenBank Accession Number:

BC105597

GeneID (NCBI):

28234

UNIPROT ID:

Q9NPD5

Full Name:

solute carrier organic anion transporter family, member 1B3

Calculated MW:

702 aa, 77 kDa

Observed MW:

68-77 kDa

Purification Method:

Protein G purification

CloneNo.:

1D9A4

Applications

Tested Applications:

WB, IF, IHC, Indirect ELISA

Species Specificity:

human

Background Information

SLCO1B3, also known as OATP8 or OATP1B3, is a member of Organic Anion Transporting Polypeptides (OATPs) which are sodium-independent organic anion transporters mediating the uptake of a wide range of structurally diverse endogenous and exogenous compounds including bile acids, hormone conjugates, peptides, toxins, as well as a multitude of therapeutic drugs. SLCO1B3 is specifically expressed in liver under normal condition, while its expression has also been observed in cancer tissues like colon, prostate and pancreas. It corresponds to Oatp1b2 in mice, with the gene symbol Slco1b2. The mouse genome encodes only a single transporter gene in the OATP1B subfamily, because SLCO1B1 and SLCO1B3 arose in primates by gene duplication after divergence from rodents. The molecular mass of SLCO1B3 is highly dependent on the glycosylation modification (deglycosylated form of 65 kDa, fully-glycosylated form of 120 kDa).

Storage

Storage:

Store at -80°C.

The product is shipped with ice packs. Upon receipt, store it immediately at -80°C

Storage Buffer:

PBS Only

For technical support and original validation data for this product please contact:

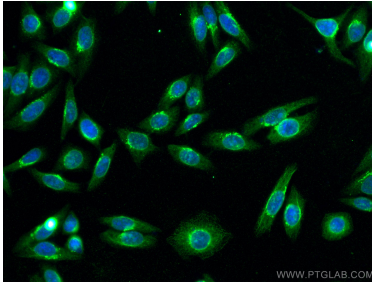
T: 4006900926

E: Proteintech-CN@ptglab.com

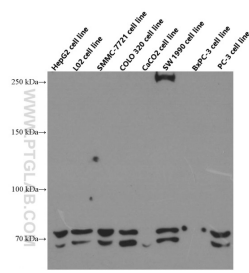
W: ptgcn.com

This product is exclusively available under Proteintech Group brand and is not available to purchase from any other manufacturer.

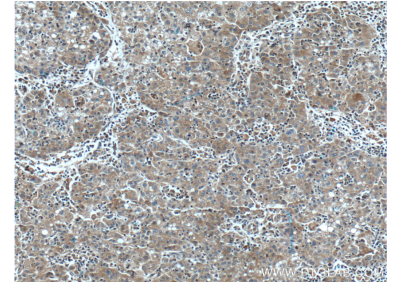
Selected Validation Data



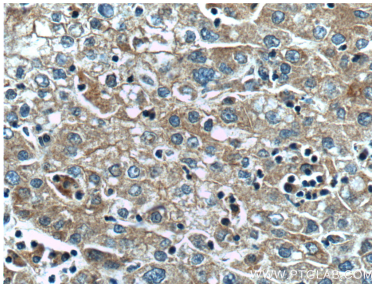
Immunofluorescent analysis of (-20°C Ethanol) fixed HepG2 cells using SLCO1B3/OATP1B3 antibody (66381-1-Ig, Clone: 1D9A4) at dilution of 1:800 and CoraLite@488-Conjugated AffiniPure Goat Anti-Mouse IgG(H+L). This data was developed using the same antibody clone with 66381-1-PBS in a different storage buffer formulation.



Western blot analysis of SLCO1B3/OATP1B3 in various cell lines using Proteintech antibody 66381-1-Ig at dilution of 1:4000 incubated at room temperature for 1.5 hours. This data was developed using the same antibody clone with 66381-1-PBS in a different storage buffer formulation.



Immunohistochemical analysis of paraffin-embedded human liver cancer tissue slide using 66381-1-Ig (SLCO1B3/OATP1B3 antibody) at dilution of 1:400 (under 10x lens. Heat mediated antigen retrieval with Tris-EDTA buffer (pH 9.0). This data was developed using the same antibody clone with 66381-1-PBS in a different storage buffer formulation.



Immunohistochemical analysis of paraffin-embedded human liver cancer tissue slide using 66381-1-Ig (SLCO1B3 antibody) at dilution of 1:400 (under 40x lens. Heat mediated antigen retrieval with Tris-EDTA buffer (pH 9.0). This data was developed using the same antibody clone with 66381-1-PBS in a different storage buffer formulation.