

For Research Use Only

Human IgG4 Monoclonal antibody, PBS Only



Catalog Number: 66408-1-PBS

Basic Information

Catalog Number:

66408-1-PBS

Size:

1mg/ml

Source:

Mouse

Isotype:

IgG1

GenBank Accession Number:

AL928742

GeneID (NCBI):

3503

Full Name:

immunoglobulin heavy constant
gamma 4 (G4m marker)

Calculated MW:

55 kDa

Observed MW:

55 kDa

Purification Method:

Protein A purification

CloneNo.:

1A1A2

Applications

Tested Applications:

WB, IF, IHC, ELISA

Species Specificity:

human

Background Information

This antibody detects the heavy chain of human IgG4. The immunogen of this antibody is the specific domain "NKGLPSSIEK" of IGHG4.

Storage

Storage:

Store at -80°C.

The product is shipped with ice packs. Upon receipt, store it immediately at -80°C

Storage Buffer:

PBS only

For technical support and original validation data for this product please contact:

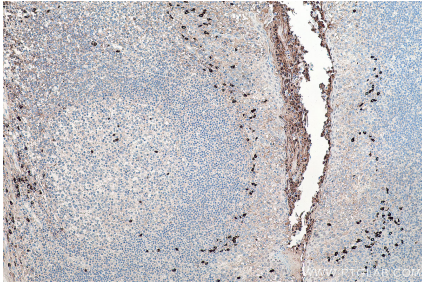
T: 4006900926

E: Proteintech-CN@ptglab.com

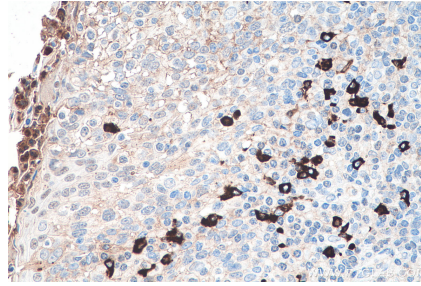
W: ptgcn.com

This product is exclusively available under Proteintech Group brand and is not available to purchase from any other manufacturer.

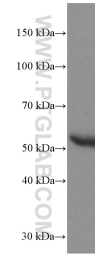
Selected Validation Data



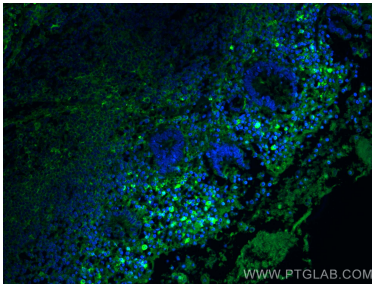
Immunohistochemical analysis of paraffin-embedded human tonsillitis tissue slide using 66408-1-Ig (Human IgG4 antibody) at dilution of 1:5000 (under 10x lens). Heat mediated antigen retrieval with Tris-EDTA buffer (pH 9.0). This data was developed using the same antibody clone with 66408-1-PBS in a different storage buffer formulation.



Immunohistochemical analysis of paraffin-embedded human tonsillitis tissue slide using 66408-1-Ig (Human IgG4 antibody) at dilution of 1:5000 (under 40x lens). Heat mediated antigen retrieval with Tris-EDTA buffer (pH 9.0). This data was developed using the same antibody clone with 66408-1-PBS in a different storage buffer formulation.



human plasma (0.4 nL) were subjected to SDS PAGE followed by western blot with 66408-1-Ig (human IgG4 Antibody) at dilution of 1:100000 incubated at room temperature for 1.5 hours. This data was developed using the same antibody clone with 66408-1-PBS in a different storage buffer formulation.



Immunofluorescent analysis of (4% PFA) fixed human appendicitis tissue using Human IgG4 antibody (66408-1-Ig, Clone: 1A1A2) at dilution of 1:400 and CoraLite®488-Conjugated AffiniPure Goat Anti-Mouse IgG(H+L). This data was developed using the same antibody clone with 66408-1-PBS in a different storage buffer formulation.