

For Research Use Only

# SCP3 Monoclonal antibody, PBS Only



Catalog Number: 66409-1-PBS

## Basic Information

<b>Catalog Number:</b> 66409-1-PBS	<b>GenBank Accession Number:</b> BC062662	<b>Purification Method:</b> Protein A purification
<b>Size:</b> 1 mg/ml	<b>GeneID (NCBI):</b> 50511	<b>CloneNo.:</b> 1A11F1
<b>Source:</b> Mouse	<b>UNIPROT ID:</b> Q8IZU3	
<b>Isotype:</b> IgG1	<b>Full Name:</b> synaptonemal complex protein 3	
<b>Immunogen Catalog Number:</b> AG19330	<b>Calculated MW:</b> 236 aa, 28 kDa	
	<b>Observed MW:</b> 30 kDa	

## Applications

**Tested Applications:**  
WB, Indirect ELISA

**Species Specificity:**  
human

## Background Information

SYCP3 is an essential structural component of the synaptonemal complex. This complex is involved in synapsis, recombination and segregation of meiotic chromosomes. SYCP3 is required for centromere pairing during meiosis in male germ cells. SYCP3 is also required for normal meiosis during spermatogenesis and male fertility. Mutations in SYCP3 are associated with azoospermia in males and susceptibility to pregnancy loss in females.

## Storage

**Storage:**  
Store at -80°C.  
**The product is shipped with ice packs. Upon receipt, store it immediately at -80°C**

**Storage Buffer:**  
PBS Only

For technical support and original validation data for this product please contact:

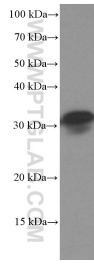
T: 4006900926

E: [Proteintech-CN@ptglab.com](mailto:Proteintech-CN@ptglab.com)

W: [ptgcn.com](http://ptgcn.com)

**This product is exclusively available under Proteintech Group brand and is not available to purchase from any other manufacturer.**

## Selected Validation Data



human testis tissue were subjected to SDS PAGE followed by western blot with 66409-1-Ig (SYCP3 Antibody) at dilution of 1:4000 incubated at room temperature for 1.5 hours. This data was developed using the same antibody clone with 66409-1-PBS in a different storage buffer formulation.