

For Research Use Only

LDLR Monoclonal antibody, PBS Only



Catalog Number: 66414-1-PBS

Featured Product

Basic Information

Catalog Number: 66414-1-PBS	GenBank Accession Number: BC014514	Purification Method: Protein A purification
Size: 1 mg/ml	GeneID (NCBI): 3949	CloneNo.: 1A2A3
Source: Mouse	ENSEMBL Gene ID: ENSG00000130164	
Isotype: IgG1	UNIPROT ID: P01130	
Immunogen Catalog Number: AG1236	Full Name: low density lipoprotein receptor	
	Calculated MW: 95 kDa	
	Observed MW: 120 kDa, 160 kDa	

Applications

Tested Applications:
WB,IHC,ELISA

Species Specificity:
human

Background Information

LDLR (low density lipoprotein receptor) is a member of the LDL receptor gene family and is involved in receptor-mediated endocytosis of specific ligands. The LDLR is a cell surface glycoprotein that scavenges LDL from the blood and regulates plasma LDL cholesterol. The cytoplasmic domain of the LDL receptor is necessary for the receptor to cluster in coated pits, which promotes the rapid endocytosis of bound LDL. The protein is highly glycosylated through N- and O-linkages and thus migrates at 100 to 160 kDa bands on SDS-PAGE.

Storage

Storage:
Store at -20°C. Stable for one year after shipment.

Storage Buffer:
PBS only

Aliquoting is unnecessary for -20°C storage

For technical support and original validation data for this product please contact:

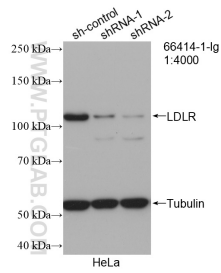
T: 4006900926

E: Proteintech-CN@ptglab.com

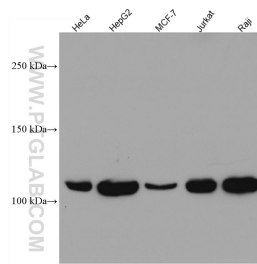
W: ptgcn.com

This product is exclusively available under Proteintech Group brand and is not available to purchase from any other manufacturer.

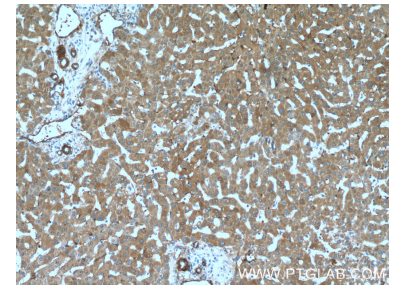
Selected Validation Data



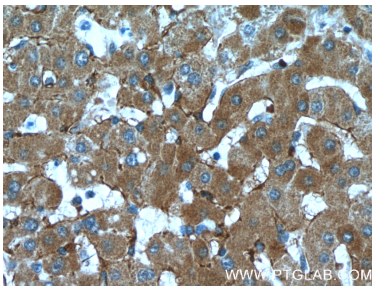
WB result of LDLR antibody (66414-1-Ig; 1:4000; incubated at room temperature for 1.5 hours) with sh-Control and sh-LDLR transfected HeLa cells. This data was developed using the same antibody clone with 66414-1-PBS in a different storage buffer formulation.



Various lysates were subjected to SDS PAGE followed by western blot with 66414-1-Ig (LDLR antibody) at dilution of 1:10000 incubated at room temperature for 1.5 hours. This data was developed using the same antibody clone with 66414-1-PBS in a different storage buffer formulation.



Immunohistochemical analysis of paraffin-embedded human liver tissue slide using 66414-1-Ig (LDLR Antibody) at dilution of 1:400 (under 10x lens). This data was developed using the same antibody clone with 66414-1-PBS in a different storage buffer formulation.



Immunohistochemical analysis of paraffin-embedded human liver tissue slide using 66414-1-Ig (LDLR Antibody) at dilution of 1:400 (under 40x lens). This data was developed using the same antibody clone with 66414-1-PBS in a different storage buffer formulation.