

For Research Use Only

GDI1 Monoclonal antibody, PBS Only

Catalog Number: 66434-1-PBS



Basic Information

Catalog Number: 66434-1-PBS	GenBank Accession Number: BC000317	Purification Method: Protein A purification
Size: 1 mg/ml	GeneID (NCBI): 2664	CloneNo.: 4E1G1
Source: Mouse	UNIPROT ID: P31150	
Isotype: IgG1	Full Name: GDP dissociation inhibitor 1	
Immunogen Catalog Number: AG17511	Calculated MW: 51 kDa	
	Observed MW: 55 kDa	

Applications

Tested Applications:
WB, Indirect ELISA, IHC, IF

Species Specificity:
human, mouse, rat, pig

Background Information

GDP dissociation inhibitors (GDIs) are proteins that regulate the GDP-GTP exchange reaction of members of the rab family. GDIs can bind and release GDP-bound Rab proteins from membranes. Two GDI proteins towards different Rab proteins have been identified. GDI 1 interacts with almost all of the Rab proteins, while GDI 2 interacts with Rab11 but not Rab3A. GDI 1 is expressed primarily in neural and sensory tissues and also in secretory cells, displaying a diffuse, cytoplasmic distribution in cells. It runs as a 55 kDa protein in SDS-PAGE. (PMID: 7929030, PMID: 19570034)

Storage

Storage:
Store at -80°C.
The product is shipped with ice packs. Upon receipt, store it immediately at -80°C

Storage Buffer:
PBS Only

For technical support and original validation data for this product please contact:

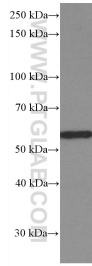
T: 4006900926

E: Proteintech-CN@ptglab.com

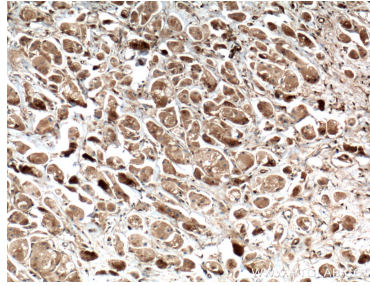
W: ptgcn.com

This product is exclusively available under Proteintech Group brand and is not available to purchase from any other manufacturer.

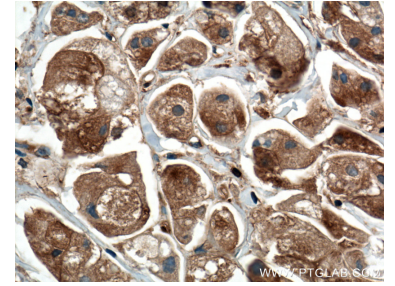
Selected Validation Data



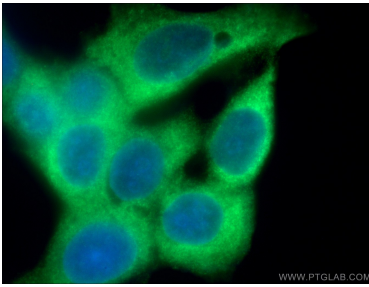
U-251 cells were subjected to SDS PAGE followed by western blot with 66434-1-Ig (GDI1 Antibody) at dilution of 1:20000 incubated at room temperature for 1.5 hours. This data was developed using the same antibody clone with 66434-1-PBS in a different storage buffer formulation.



Immunohistochemical analysis of paraffin-embedded human breast cancer tissue slide using 66434-1-Ig (GDI1 antibody) at dilution of 1:1000 (under 10x lens. Heat mediated antigen retrieval with Tris-EDTA buffer (pH 9.0). This data was developed using the same antibody clone with 66434-1-PBS in a different storage buffer formulation.



Immunohistochemical analysis of paraffin-embedded human breast cancer tissue slide using 66434-1-Ig (GDI1 antibody) at dilution of 1:1000 (under 40x lens. Heat mediated antigen retrieval with Tris-EDTA buffer (pH 9.0). This data was developed using the same antibody clone with 66434-1-PBS in a different storage buffer formulation.



Immunofluorescent analysis of (-20°C Ethanol) fixed MCF-7 cells using 66434-1-Ig (GDI1 antibody) at dilution of 1:100 and Alexa Fluor 488-conjugated AffiniPure Goat Anti-Mouse IgG(H+L). This data was developed using the same antibody clone with 66434-1-PBS in a different storage buffer formulation.