

For Research Use Only

PEBP1 Monoclonal antibody, PBS Only



Catalog Number: 66438-1-PBS

Basic Information

| | | |
|--|---|---|
| Catalog Number: 66438-1-PBS | GenBank Accession Number: BC008714 | Purification Method: Protein G purification |
| Size: 1 mg/ml | GeneID (NCBI): 5037 | CloneNo.: 2D4D11 |
| Source: Mouse | UNIPROT ID: P30086 | |
| Isotype: IgG1 | Full Name: phosphatidylethanolamine binding protein 1 | |
| Immunogen Catalog Number: AG0864 | Calculated MW: 21 kDa | |
| | Observed MW: 23-27 kDa | |

Applications

Tested Applications:
WB, IHC, Indirect ELISA

Species Specificity:
human, mouse, rat

Background Information

Raf kinase inhibitor protein (RKIP), also termed phosphatidylethanolamine binding protein PEBP1, was initially identified as a potent inhibitor of Raf-1/MEK/ERK, NF- κ B, and G-protein-coupled receptor signaling pathways. Later RKIP has been further identified as a metastasis suppressor and its loss of expression has been reported in various cancers. Its expression has been proposed as a prognostic marker for patients diagnosed with the above cancers.

Storage

Storage:
Store at -80°C.

Storage Buffer:
PBS Only

For technical support and original validation data for this product please contact:

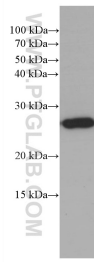
T: 4006900926

E: Proteintech-CN@ptglab.com

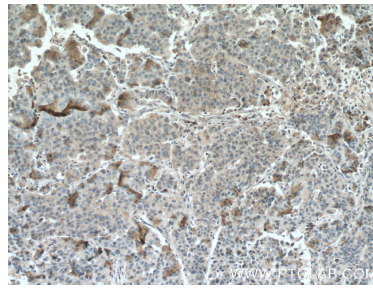
W: ptgcn.com

This product is exclusively available under Proteintech Group brand and is not available to purchase from any other manufacturer.

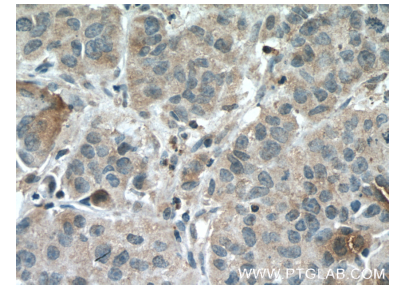
Selected Validation Data



fetal human brain tissue were subjected to SDS PAGE followed by western blot with 66438-1-Ig (PEBP1 Antibody) at dilution of 1:3000 incubated at room temperature for 1.5 hours. This data was developed using the same antibody clone with 66438-1-PBS in a different storage buffer formulation.



Immunohistochemical analysis of paraffin-embedded human prostate cancer tissue slide using 66438-1-Ig (PEBP1 Antibody) at dilution of 1:500 (under 10x lens). proteolytic pre-treatment mediated antigen retrieved with Tris-EDTA buffer (pH9). This data was developed using the same antibody clone with 66438-1-PBS in a different storage buffer formulation.



Immunohistochemical analysis of paraffin-embedded human prostate cancer tissue slide using 66438-1-Ig (PEBP1 Antibody) at dilution of 1:500 (under 40x lens). proteolytic pre-treatment mediated antigen retrieved with Tris-EDTA buffer (pH9). This data was developed using the same antibody clone with 66438-1-PBS in a different storage buffer formulation.



Immunofluorescent analysis of (4% PFA) fixed PC-12 cells using PEBP1 antibody (66438-1-Ig, Clone: 2D4D11) at dilution of 1:400 and CoraLite®488-Conjugated AffiniPure Goat Anti-Mouse IgG(H+L). This data was developed using the same antibody clone with 66438-1-PBS in a different storage buffer formulation.



Immunofluorescent analysis of (-20°C Ethanol) fixed A549 cells using PEBP1 antibody (66438-1-Ig, Clone: 2D4D11) at dilution of 1:400 and CoraLite®488-Conjugated AffiniPure Goat Anti-Mouse IgG(H+L), CL594-Phalloidin (red). This data was developed using the same antibody clone with 66438-1-PBS in a different storage buffer formulation.