

For Research Use Only

# HLA-G Monoclonal antibody, PBS Only



Catalog Number: 66447-1-PBS

## Basic Information

<b>Catalog Number:</b> 66447-1-PBS	<b>GenBank Accession Number:</b> BC021708	<b>Purification Method:</b> Protein A purification
<b>Size:</b> 1 mg/ml	<b>GeneID (NCBI):</b> 3135	<b>CloneNo.:</b> 1E5A10
<b>Source:</b> Mouse	<b>UNIPROT ID:</b> P17693	
<b>Isotype:</b> IgG2b	<b>Full Name:</b> major histocompatibility complex, class I, G	
<b>Immunogen Catalog Number:</b> AG10839	<b>Calculated MW:</b> 338 aa, 38 kDa	
	<b>Observed MW:</b> 33-45 kDa	

## Applications

**Tested Applications:**  
WB,IHC,ELISA

**Species Specificity:**  
human

## Background Information

Human major histocompatibility complex (MHC) antigens, also referred to as human leukocyte antigens (HLA), are encoded by genes located on the short arm of chromosome 6 (6p21.3). HLA-G is a non-classical MHC class I molecule with multiple immunoregulatory properties. HLA-G exhibits a restricted pattern of expression that includes placental extravillous trophoblasts at the maternal-fetal interface, where it abolishes maternal immune cell activity against fetus and establishes immune tolerance. Aberrant expression of HLA-G has been found in a variety of human neoplastic diseases. It plays an important role in the escape of tumor cells from immunosurveillance.

## Storage

**Storage:**  
Store at -20°C. Stable for one year after shipment.

**Storage Buffer:**  
PBS only

Aliquoting is unnecessary for -20°C storage

For technical support and original validation data for this product please contact:

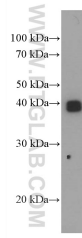
T: 4006900926

E: [Proteintech-CN@ptglab.com](mailto:Proteintech-CN@ptglab.com)

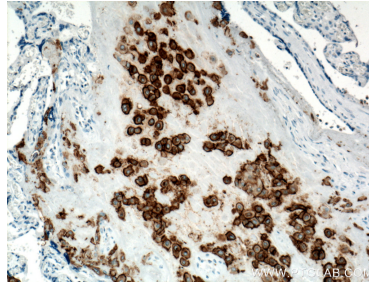
W: [ptgcn.com](http://ptgcn.com)

**This product is exclusively available under Proteintech Group brand and is not available to purchase from any other manufacturer.**

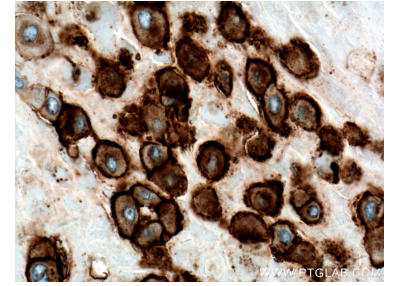
## Selected Validation Data



human placenta tissue were subjected to SDS PAGE followed by western blot with 66447-1-Ig (HLA-G Antibody) at dilution of 1:5000 incubated at room temperature for 1.5 hours. This data was developed using the same antibody clone with 66447-1-PBS in a different storage buffer formulation.



Immunohistochemical analysis of paraffin-embedded human placenta tissue slide using 66447-1-Ig (HLA-G Antibody) at dilution of 1:400 (under 10x lens). Heat mediated antigen retrieval with Tris-EDTA buffer (pH 9.0). This data was developed using the same antibody clone with 66447-1-PBS in a different storage buffer formulation.



Immunohistochemical analysis of paraffin-embedded human placenta tissue slide using 66447-1-Ig (HLA-G Antibody) at dilution of 1:400 (under 40x lens). Heat mediated antigen retrieval with Tris-EDTA buffer (pH 9.0). This data was developed using the same antibody clone with 66447-1-PBS in a different storage buffer formulation.