

For Research Use Only

SERPINA7 Monoclonal antibody, PBS Only



Catalog Number: 66454-1-PBS

Basic Information

Catalog Number:

66454-1-PBS

Size:

1 mg/ml

Source:

Mouse

Isotype:

IgG2a

Immunogen Catalog Number:

AG9823

GenBank Accession Number:

BC020747

GeneID (NCBI):

6906

UNIPROT ID:

P05543

Full Name:

serpin peptidase inhibitor, clade A
(alpha-1 antiproteinase, antitrypsin),
member 7

Calculated MW:

415 aa, 46 kDa

Observed MW:

50 kDa

Purification Method:

Protein A purification

CloneNo.:

1B11B10

Applications

Tested Applications:

WB, Indirect ELISA, IHC, IF

Species Specificity:

human, mouse, pig, rat

Background Information

Storage

Storage:

Store at -80°C.

The product is shipped with ice packs. Upon receipt, store it immediately at -80°C

Storage Buffer:

PBS Only

For technical support and original validation data for this product please contact:

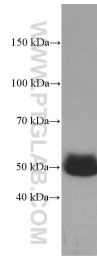
T: 4006900926

E: Proteintech-CN@ptglab.com

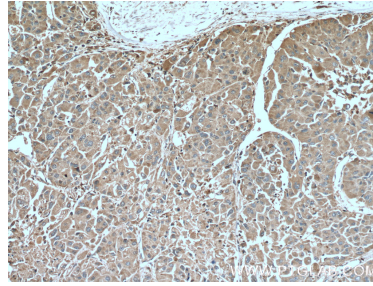
W: ptgcn.com

This product is exclusively available under Proteintech Group brand and is not available to purchase from any other manufacturer.

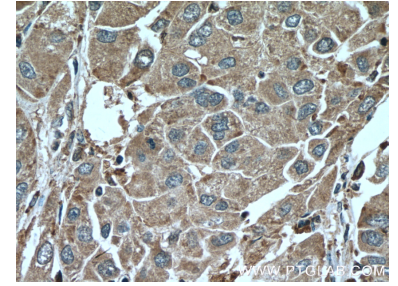
Selected Validation Data



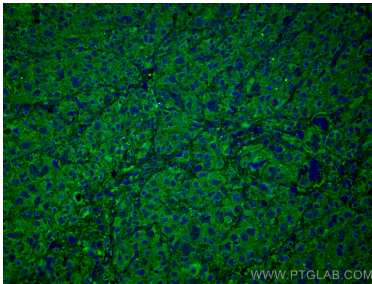
human plasma were subjected to SDS PAGE followed by western blot with 66454-1-Ig (SERPINA 7 antibody) at dilution of 1:2000 incubated at room temperature for 1.5 hours. This data was developed using the same antibody clone with 66454-1-PBS in a different storage buffer formulation.



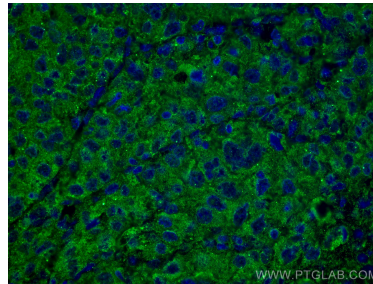
Immunohistochemical analysis of paraffin-embedded human liver cancer tissue slide using 66454-1-Ig (SERPINA 7 antibody) at dilution of 1:500 (under 10x lens. Heat mediated antigen retrieval with Tris-EDTA buffer (pH 9.0). This data was developed using the same antibody clone with 66454-1-PBS in a different storage buffer formulation.



Immunohistochemical analysis of paraffin-embedded human liver cancer tissue slide using 66454-1-Ig (SERPINA 7 antibody) at dilution of 1:500 (under 40x lens. Heat mediated antigen retrieval with Tris-EDTA buffer (pH 9.0). This data was developed using the same antibody clone with 66454-1-PBS in a different storage buffer formulation.



Immunofluorescent analysis of (4% PFA) fixed human liver cancer tissue using SERPINA 7 antibody (66454-1-Ig, Clone: 1B11B10) at dilution of 1:400 and CoraLite®488-Conjugated AffiniPure Goat Anti-Mouse IgG(H+L). This data was developed using the same antibody clone with 66454-1-PBS in a different storage buffer formulation.



Immunofluorescent analysis of (4% PFA) fixed human liver cancer tissue using SERPINA 7 antibody (66454-1-Ig, Clone: 1B11B10) at dilution of 1:400 and CoraLite®488-Conjugated AffiniPure Goat Anti-Mouse IgG(H+L). This data was developed using the same antibody clone with 66454-1-PBS in a different storage buffer formulation.