

# EGFR Monoclonal antibody

Catalog Number: 66455-1-Ig

Featured Product

53 Publications

## Basic Information

## Catalog Number:

66455-1-Ig

## Size:

1000 µg/ml

## Source:

Mouse

## Isotype:

IgG1

## Immunogen Catalog Number:

AG24947

## GenBank Accession Number:

BC094761

## GeneID (NCBI):

1956

## UNIPROT ID:

P00533

## Full Name:

epidermal growth factor receptor  
(erythroblastic leukemia viral (v-erb-  
b) oncogene homolog, avian)

## Calculated MW:

1210 aa, 134 kDa

## Observed MW:

145-165 kDa

## Purification Method:

Protein G purification

## CloneNo.:

2A2H10

## Recommended Dilutions:

WB 1:5000-1:50000

IHC 1:1000-1:4000

## Applications

## Tested Applications:

FC, IHC, WB, ELISA

## Cited Applications:

IF, IHC, WB

## Species Specificity:

human

## Cited Species:

human

**Note-IHC: suggested antigen retrieval with  
TE buffer pH 9.0; (\*) Alternatively, antigen  
retrieval may be performed with citrate  
buffer pH 6.0**

## Positive Controls:

**WB**: A431 cells, EC109 cells, A549 cells, HeLa cells,  
HepG2 cells, LNCaP cells, PC-3 cells, SKOV-3 cells,  
MDA-MB-468 cells, MDA-MB-231 cells, PC-3 cells

**IHC**: human tonsillitis tissue, human breast cancer  
tissue, human cervical cancer tissue, human colon  
cancer tissue, human gliomas tissue, human lung  
cancer tissue, human skin cancer tissue

## Background Information

EGFR, also named as ERBB1, is a cell-surface receptor for members of the epidermal growth factor family (EGF-family) of extracellular protein ligands. Binding of the protein to a ligand induces receptor dimerization and tyrosine autophosphorylation and leads to cell proliferation. The gene resides on chromosome 7p12, encoding a 170 kDa membrane-associated glycoprotein. Recent studies have shown EGFR plays a critical role in cancer development and progression, including cell proliferation, apoptosis, angiogenesis, and metastatic spread. Mutations in this gene are associated with lung cancer.

## Notable Publications

Author	Pubmed ID	Journal	Application
Dali Zhao	34555268	FEBS Open Bio	WB
Huilan Li	33076176	Talanta	WB, IF
Jiarui Cui	36187764	Front Physiol	IHC

## Storage

## Storage:

Store at -20°C. Stable for one year after shipment.

## Storage Buffer:

PBS with 0.02% sodium azide and 50% glycerol pH 7.3.

Aliquoting is unnecessary for -20°C storage

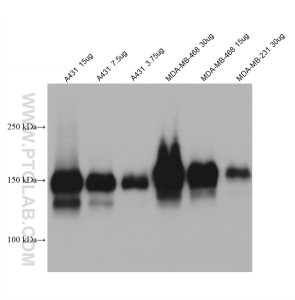
For technical support and original validation data for this product please contact:

T: 4006900926

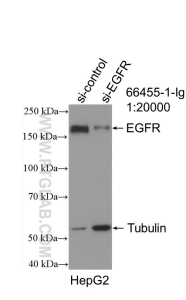
E: [Proteintech-CN@ptglab.com](mailto:Proteintech-CN@ptglab.com)W: [ptgcn.com](http://ptgcn.com)

**This product is exclusively available under Proteintech  
Group brand and is not available to purchase from any  
other manufacturer.**

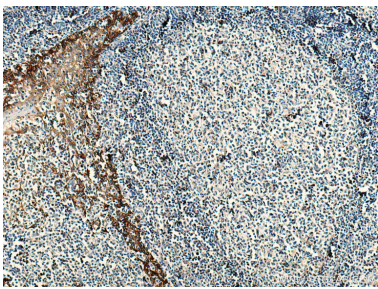
Selected Validation Data



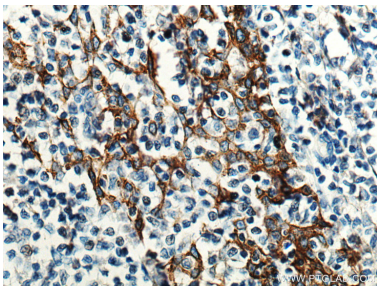
Various lysates were subjected to SDS PAGE followed by western blot with 66455-1-Ig (EGFR antibody) at dilution of 1:20000 incubated at room temperature for 1.5 hours.



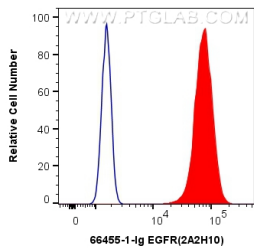
WB result of EGFR antibody (66455-1-Ig; 1:20000; incubated at room temperature for 1.5 hours) with sh-Control and sh-EGFR transfected HepG2 cells.



Immunohistochemical analysis of paraffin-embedded human tonsillitis tissue slide using 66455-1-Ig (EGFR antibody) at dilution of 1:2000 (under 10x lens). Heat mediated antigen retrieval with Tris-EDTA buffer (pH 9.0).



Immunohistochemical analysis of paraffin-embedded human tonsillitis tissue slide using 66455-1-Ig (EGFR antibody) at dilution of 1:2000 (under 40x lens). Heat mediated antigen retrieval with Tris-EDTA buffer (pH 9.0).



1X10<sup>6</sup> A431 cells were intracellularly stained with 0.4 ug Anti-Human EGFR (66455-1-Ig, Clone:2A2H10) and Coralite®488-Conjugated AffiniPure Goat Anti-Mouse IgG(H+L) at dilution 1:1000 (red), or 0.4 ug Mouse IgG1 Isotype Control (MOPC-21) (65124-1-Ig, Clone: MOPC-21) (blue). Cells were fixed with 4% PFA and permeabilized with Flow Cytometry Perm Buffer (PF00011-C).