

For Research Use Only

# rabbit Heavy chain of Rabbit IgG Monoclonal antibody



Catalog Number: 66467-1-Ig **3 Publications**

## Basic Information

Catalog Number:

66467-1-Ig

Size:

1985  $\mu$ g/ml

Source:

Mouse

Isotype:

IgG1

GenBank Accession Number:

GeneID (NCBI):

UNIPROT ID:

N/A

Full Name:

Observed MW:

50-55 kDa

Purification Method:

Protein G purification

CloneNo.:

1C9A5

Recommended Dilutions:

WB 1:1000-1:4000

## Applications

Tested Applications:

WB, ELISA

Cited Applications:

WB, IF

Species Specificity:

rabbit

Cited Species:

human, rat, mouse

Positive Controls:

WB : rabbit serum tissue,

## Background Information

This antibody specifically recognizes the heavy chain of Rabbit IgG.

## Notable Publications

Author	Pubmed ID	Journal	Application
Bing Zhu	31788110	Oncol Lett	
Bo Huang	38237745	Genomics	IF
Lei Wang	37979663	Pharmacol Res	WB

## Storage

Storage:

Store at -20°C. Stable for one year after shipment.

Storage Buffer:

PBS with 0.02% sodium azide and 50% glycerol pH 7.3.

Aliquoting is unnecessary for -20°C storage

For technical support and original validation data for this product please contact:

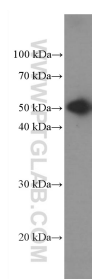
T: 4006900926

E: [Proteintech-CN@ptglab.com](mailto:Proteintech-CN@ptglab.com)

W: [ptgcn.com](http://ptgcn.com)

This product is exclusively available under Proteintech Group brand and is not available to purchase from any other manufacturer.

## Selected Validation Data



rabbit serum (10nL) were subjected to SDS PAGE followed by western blot with 66467-1-Ig (mouse McAb to Heavy chain of Rabbit IgG) at dilution of 1:2000 incubated at room temperature for 1.5 hours.