

For Research Use Only

Hemopexin Monoclonal antibody, PBS Only



Catalog Number: 66479-1-PBS

Basic Information

Catalog Number:

66479-1-PBS

Size:

1mg/ml

Source:

Mouse

Isotype:

IgG1

Immunogen Catalog Number:

AG8533

GenBank Accession Number:

BC005395

GeneID (NCBI):

3263

UNIPROT ID:

P02790

Full Name:

hemopexin

Calculated MW:

254 aa, 29 kDa

Observed MW:

65-75 kDa

Purification Method:

Protein G purification

CloneNo.:

3A9D6

Applications

Tested Applications:

Indirect ELISA, IF-P, IHC, WB

Species Specificity:

pig, rat, human

Background Information

Hemopexin (HPX) is the plasma protein responsible for scavenging heme, thus preventing heme-mediated oxidative stress and heme-bound iron loss. In addition, hemopexin blocks heme activation of immune receptors and vascular inflammatory processes. It is mainly expressed in liver, the synthesis of which is induced after inflammation. Alterations of plasma hemopexin level have been linked to disorders like atherosclerosis and inflammatory diseases.

Storage

Storage:

Store at -80°C.

The product is shipped with ice packs. Upon receipt, store it immediately at -80°C

Storage Buffer:

PBS Only

For technical support and original validation data for this product please contact:

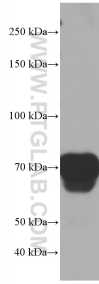
T: 4006900926

E: Proteintech-CN@ptglab.com

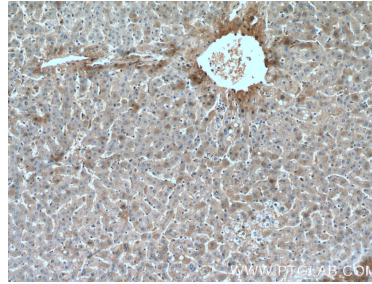
W: ptgcn.com

This product is exclusively available under Proteintech Group brand and is not available to purchase from any other manufacturer.

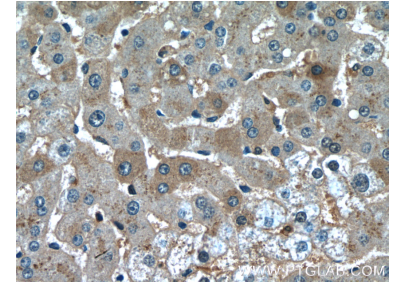
Selected Validation Data



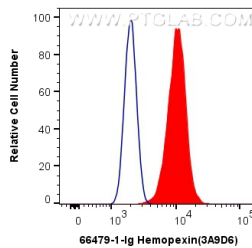
0.7 μ L human plasma was subjected to SDS PAGE followed by western blot with 66479-1-Ig (Hemopexin antibody) at dilution of 1:20000 incubated at room temperature for 1.5 hours. This data was developed using the same antibody clone with 66479-1-PBS in a different storage buffer formulation.



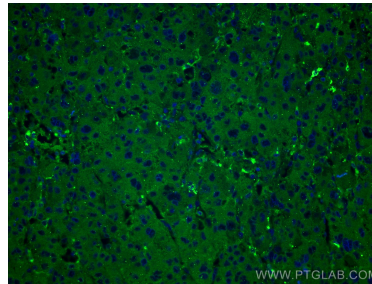
Immunohistochemical analysis of paraffin-embedded human liver tissue slide using 66479-1-Ig (Hemopexin antibody) at dilution of 1:500 (under 10x lens). This data was developed using the same antibody clone with 66479-1-PBS in a different storage buffer formulation.



Immunohistochemical analysis of paraffin-embedded human liver tissue slide using 66479-1-Ig (Hemopexin antibody) at dilution of 1:500 (under 40x lens). This data was developed using the same antibody clone with 66479-1-PBS in a different storage buffer formulation.



1X10⁶ HepG2 cells were intracellularly stained with 0.5 μ g Anti-Human Hemopexin (66479-1-Ig, Clone:3A9D6) and CoraLite[®]488-Conjugated AffiniPure Goat Anti-Mouse IgG(H+L) at dilution 1:1000 (red), or 0.5 μ g Control Antibody. Cells were fixed with 4% PFA and permeabilized with Flow Cytometry Perm Buffer (PF00011-C). This data was developed using the same antibody clone with 66479-1-PBS in a different storage buffer formulation.



Immunofluorescent analysis of (4% PFA) fixed human liver cancer tissue using Hemopexin antibody (66479-1-Ig, Clone: 3A9D6) at dilution of 1:400 and CoraLite[®]488-Conjugated AffiniPure Goat Anti-Mouse IgG(H+L). This data was developed using the same antibody clone with 66479-1-PBS in a different storage buffer formulation.