

For Research Use Only

# CD40L/CD154 Monoclonal antibody, PBS Only



Catalog Number: 66502-1-PBS

## Basic Information

<b>Catalog Number:</b> 66502-1-PBS	<b>GenBank Accession Number:</b> BC071754	<b>Purification Method:</b> Protein A purification
<b>Size:</b> 1 mg/ml	<b>GeneID (NCBI):</b> 959	<b>CloneNo.:</b> 1E6D10
<b>Source:</b> Mouse	<b>UNIPROT ID:</b> P29965	
<b>Isotype:</b> IgG2a	<b>Full Name:</b> CD40 ligand	
<b>Immunogen Catalog Number:</b> AG24941	<b>Calculated MW:</b> 261 aa, 29 kDa	
	<b>Observed MW:</b> 30 kDa	

## Applications

**Tested Applications:**  
WB, Indirect ELISA

**Species Specificity:**  
Human, rat

## Background Information

The CD40 ligand (CD40L, TRAP, CD154), a member of the TNF superfamily of ligands, is expressed as either a 33-kd transmembrane homologue or 18-kd soluble form (sCD154). CD40L is primarily expressed on activated CD4+ T cells and on a small proportion of CD8+ T cells and platelets. It binds to CD40 on antigen-presenting cells (APC), which leads to many effects depending on the target cell type. Recent studies have suggested that CD40/CD40L interactions regulate oxidative stress and affect various signaling pathways in both the immunological and the cardiovascular systems. The CD40/CD40L system is also involved in tumorigenesis. Its expression is tightly regulated, and abnormal levels of CD40L are associated with the pathogenesis of atheromatous plaque destabilization and thrombotic events. Multiple mutations in CD40LG gene have been identified that are associated with hyper-IgM immunodeficiency syndrome type 1.

## Storage

**Storage:**  
Store at -80°C.

**Storage Buffer:**  
PBS Only

For technical support and original validation data for this product please contact:

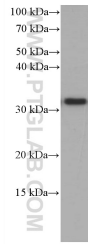
T: 4006900926

E: [Proteintech-CN@ptglab.com](mailto:Proteintech-CN@ptglab.com)

W: [ptgcn.com](http://ptgcn.com)

**This product is exclusively available under Proteintech Group brand and is not available to purchase from any other manufacturer.**

## Selected Validation Data



Jurkat cells were subjected to SDS PAGE followed by western blot with 66502-1-Ig (CD40L/CD154 antibody) at dilution of 1:3000 incubated at room temperature for 1.5 hours. This data was developed using the same antibody clone with 66502-1-PBS in a different storage buffer formulation.