

For Research Use Only

# PYCR1 Monoclonal antibody, PBS Only



Catalog Number: 66510-1-PBS

## Basic Information

<b>Catalog Number:</b> 66510-1-PBS	<b>GenBank Accession Number:</b> BC022244	<b>Purification Method:</b> Protein A purification
<b>Size:</b> 1 mg/ml	<b>GeneID (NCBI):</b> 5831	<b>CloneNo.:</b> 1H2G1
<b>Source:</b> Mouse	<b>UNIPROT ID:</b> P32322	
<b>Isotype:</b> IgG2a	<b>Full Name:</b> pyrroline-5-carboxylate reductase 1	
<b>Immunogen Catalog Number:</b> AG17919	<b>Calculated MW:</b> 319 aa, 33.8 kDa	
	<b>Observed MW:</b> 33 kDa, 35 kDa	

## Applications

**Tested Applications:**  
WB, Indirect ELISA, IHC, IF

**Species Specificity:**  
Human, Mouse, Rat

## Background Information

PYCR1, also named as P5CR1, belongs to the pyrroline-5-carboxylate reductase family. It is a housekeeping enzyme that catalyzes the last step in proline biosynthesis. PYCR1 can utilize both NAD and NADP, but has higher affinity for NAD. It is involved in the cellular response to oxidative stress. Mutation in PYCR1 will cause ARCL type II (ARCL2B). Some mutation will cause DeBary syndrome (DBS) which is characterized by progeroid features, ophthalmological abnormalities, intrauterine growth retardation, and cutis laxa.

## Storage

**Storage:**  
Store at -80°C.  
**The product is shipped with ice packs. Upon receipt, store it immediately at -80°C**

**Storage Buffer:**  
PBS Only

For technical support and original validation data for this product please contact:

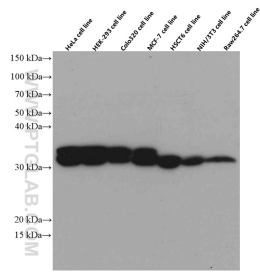
T: 4006900926

E: [Proteintech-CN@ptglab.com](mailto:Proteintech-CN@ptglab.com)

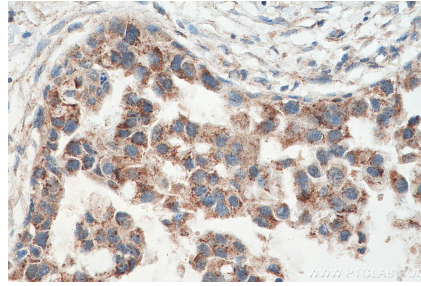
W: [ptgcn.com](http://ptgcn.com)

**This product is exclusively available under Proteintech Group brand and is not available to purchase from any other manufacturer.**

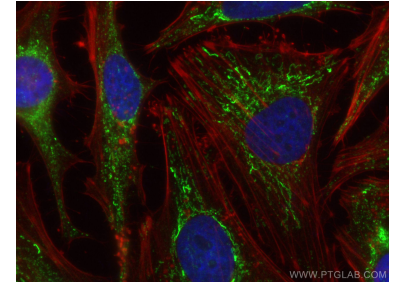
## Selected Validation Data



Various lysates were subjected to SDS PAGE followed by western blot with 66510-1-Ig (PYCR1 antibody) at dilution of 1:3000 incubated at room temperature for 1 hour. This data was developed using the same antibody clone with 66510-1-PBS in a different storage buffer formulation.



Immunohistochemical analysis of paraffin-embedded human breast cancer tissue slide using 66510-1-Ig (PYCR1 antibody) at dilution of 1:300 (under 40x lens). Heat mediated antigen retrieval with Tris-EDTA buffer (pH 9.0). This data was developed using the same antibody clone with 66510-1-PBS in a different storage buffer formulation.



Immunofluorescent analysis of (4% PFA) fixed HeLa cells using PYCR1 antibody (66510-1-Ig, Clone: 1H2G1 ) at dilution of 1:800 and CoraLite®488-Conjugated AffiniPure Goat Anti-Mouse IgG(H+L), CL594-Phalloidin (red). This data was developed using the same antibody clone with 66510-1-PBS in a different storage buffer formulation.