

For Research Use Only

Recoverin Monoclonal antibody, PBS Only



Catalog Number: 66521-1-PBS

Basic Information

Catalog Number: 66521-1-PBS	GenBank Accession Number: BC001720	Purification Method: Protein G purification
Size: 1 mg/ml	GeneID (NCBI): 5957	CloneNo.: 3B8E8
Source: Mouse	UNIPROT ID: P35243	
Isotype: IgG1	Full Name: recoverin	
Immunogen Catalog Number: AG0119	Calculated MW: 24 kDa	
	Observed MW: 23 kDa	

Applications

Tested Applications:
WB, Indirect ELISA

Species Specificity:
Human, rat, pig, mouse

Background Information

Recoverin, belonging to a family of the neuronal calcium sensor (NCS) proteins, has a restricted expression in retinal photoreceptors or neurons or neuroendocrine cells. It has been suggested to play a role in light and dark adaptation by regulating rhodopsin phosphorylation. Recently, it has been found that autoantibodies against recoverin (24 kDa) have been strongly associated with cancer-associated retinopathy (CAR) syndrome, a paraneoplastic disease of the retina. But functions of recoverin in cancer cells remain unknown.

Storage

Storage:
Store at -80°C.

Storage Buffer:
PBS Only

For technical support and original validation data for this product please contact:

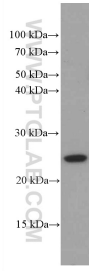
T: 4006900926

E: Proteintech-CN@ptglab.com

W: ptgcn.com

This product is exclusively available under Proteintech Group brand and is not available to purchase from any other manufacturer.

Selected Validation Data



pig retina tissue were subjected to SDS PAGE followed by western blot with 66521-1-Ig (Recoverin antibody) at dilution of 1:5000 incubated at room temperature for 1.5 hours. This data was developed using the same antibody clone with 66521-1-PBS in a different storage buffer formulation.