

For Research Use Only

# Cathepsin D Monoclonal antibody

Catalog Number: 66534-1-Ig

Featured Product

8 Publications



## Basic Information

<b>Catalog Number:</b> 66534-1-Ig	<b>GenBank Accession Number:</b> BC016320	<b>Purification Method:</b> Protein A purification
<b>Size:</b> 1000 µg/ml	<b>GeneID (NCBI):</b> 1509	<b>CloneNo.:</b> 2F6F7
<b>Source:</b> Mouse	<b>UNIPROT ID:</b> P07339	<b>Recommended Dilutions:</b> WB 1:5000-1:50000 IHC 1:500-1:2000 IF 1:200-1:800
<b>Isotype:</b> IgG2b	<b>Full Name:</b> cathepsin D	
<b>Immunogen Catalog Number:</b> AG15254	<b>Calculated MW:</b> 412 aa, 45 kDa	
	<b>Observed MW:</b> 32 kDa, 48 kDa, 52 kDa	

## Applications

<b>Tested Applications:</b> WB, IF/ICC, IHC, ELISA	<b>Positive Controls:</b> WB : Saos-2 cells, MCF-7 cells, T-47D cells, HepG2 cells IHC : human liver cancer tissue, human breast cancer tissue IF : HepG2 cells,
<b>Cited Applications:</b> WB, IF, IHC	
<b>Species Specificity:</b> Human	
<b>Cited Species:</b> human, rat	
<b>Note-IHC: suggested antigen retrieval with TE buffer pH 9.0; (*) Alternatively, antigen retrieval may be performed with citrate buffer pH 6.0</b>	

## Background Information

CTSD (Cathepsin D) is also named as CPSD, belongs to the peptidase A1 family. It is ubiquitously expressed and is involved in proteolytic degradation, cell invasion, and apoptosis. Human CTSD is synthesized as a 52-kDa precursor that is converted into an active 48-kDa single-chain intermediate in the endosomes, and then into a fully active mature form, composed of a 34-kDa heavy chain and a 14-kDa light chain, in the lysosomes. It is a lysosomal acid protease found in neutrophils and monocytes and involved in the pathogenesis of several diseases such as breast cancer and possibly Alzheimer disease. (PMID: 27114232, PMID: 30717773, PMID: 30051532)

## Notable Publications

Author	Pubmed ID	Journal	Application
Zhiyuan Wu	34575099	Life (Basel)	WB,IF
Hualin Fu	36448495	FEBS Lett	IF
Peipei Ding	35649359	Cell Rep	WB

## Storage

**Storage:**  
Store at -20°C. Stable for one year after shipment.  
**Storage Buffer:**  
PBS with 0.02% sodium azide and 50% glycerol pH 7.3.  
Aliquoting is unnecessary for -20°C storage

For technical support and original validation data for this product please contact:

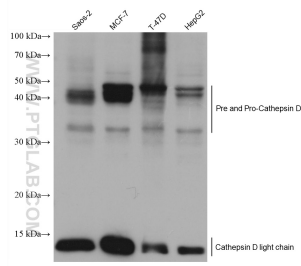
T: 4006900926

E: Proteintech-CN@ptglab.com

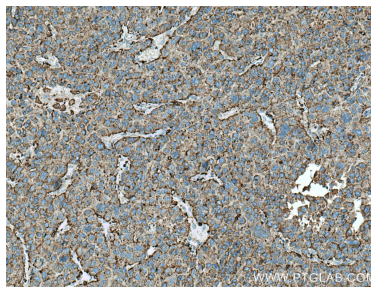
W: ptgcn.com

This product is exclusively available under Proteintech Group brand and is not available to purchase from any other manufacturer.

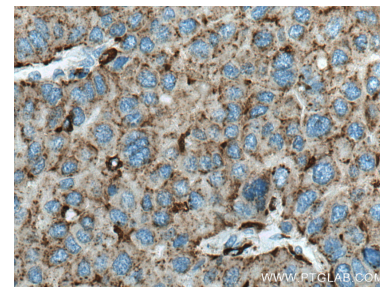
## Selected Validation Data



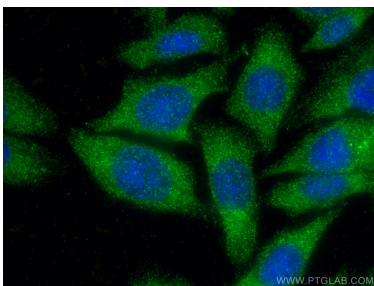
Various lysates were subjected to SDS PAGE followed by western blot with 66534-1-Ig (Cathepsin D antibody) at dilution of 1:10000 incubated at room temperature for 1.5 hours.



Immunohistochemical analysis of paraffin-embedded human liver cancer tissue slide using 66534-1-Ig (Cathepsin D antibody) at dilution of 1:1000 (under 10x lens). Heat mediated antigen retrieval with Tris-EDTA buffer (pH 9.0).



Immunohistochemical analysis of paraffin-embedded human liver cancer tissue slide using 66534-1-Ig (Cathepsin D antibody) at dilution of 1:1000 (under 40x lens). Heat mediated antigen retrieval with Tris-EDTA buffer (pH 9.0).



Immunofluorescent analysis of (-20°C Ethanol) fixed HepG2 cells using Cathepsin D antibody (66534-1-Ig, Clone: 2F6F7) at dilution of 1:400 and CoraLite®488-Conjugated AffiniPure Goat Anti-Mouse IgG(H+L).