

For Research Use Only

EXOC3L2 Monoclonal antibody, PBS Only



Catalog Number: 66537-1-PBS

Basic Information

Catalog Number: 66537-1-PBS	GenBank Accession Number: BC104947	Purification Method: Protein G purification
Size: 1 mg/ml	GeneID (NCBI): 90332	CloneNo.: 3C1C2
Source: Mouse	UNIPROT ID: Q2M3D2	
Isotype: IgG1	Full Name: exocyst complex component 3-like 2	
Immunogen Catalog Number: AG26912	Calculated MW: 46 kDa	
	Observed MW: 46 kDa	

Applications

Tested Applications:
WB, Indirect ELISA, IF

Species Specificity:
Human

Background Information

The exocyst is a protein complex that ensures spatial targeting of exocytotic vesicles to the plasma membrane. Exocyst complex component 3-like 2 (EXOC3L2) associates with the exocyst complex and mediates directional migration of endothelial cells (PMID: 21566143). The gene of human EXOC3L2 maps to chromosome 19q13.32 and encodes a deduced 409-amino acid protein with a calculated molecular mass of about 46 kDa. Mouse Exoc3l2 gene encodes an approximately 250-amino acid protein that lacks the N-terminal domain of human EXOC3L2. Mutations in EXOC3L2 gene may be associated with Alzheimer's disease.

Storage

Storage:
Store at -80°C.

Storage Buffer:
PBS Only

For technical support and original validation data for this product please contact:

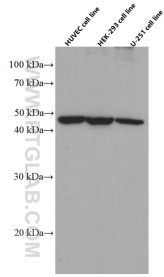
T: 4006900926

E: Proteintech-CN@ptglab.com

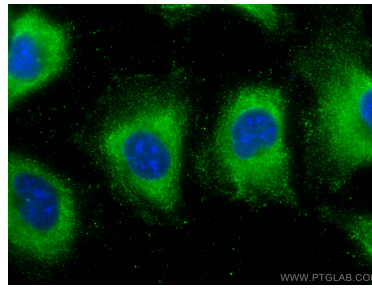
W: ptgcn.com

This product is exclusively available under Proteintech Group brand and is not available to purchase from any other manufacturer.

Selected Validation Data



HUVEC, HEK-293 and U-251 cells were subjected to SDS PAGE followed by western blot with 66537-1-Ig (EXOC3L2 antibody) at dilution of 1:3000 incubated at room temperature for 1.5 hours. This data was developed using the same antibody clone with 66537-1-PBS in a different storage buffer formulation.



Immunofluorescent analysis of (-20°C Methanol) fixed HUVEC cells using EXOC3L2 antibody (66537-1-Ig, Clone: 3C1C2) at dilution of 1:800 and CoraLite®488-Conjugated AffiniPure Goat Anti-Mouse IgG(H+L). This data was developed using the same antibody clone with 66537-1-PBS in a different storage buffer formulation.