

For Research Use Only

KI67 Monoclonal antibody, PBS Only (Detector)



Catalog Number: 66555-3-PBS

Basic Information

Catalog Number:

66555-3-PBS

Size:

1 mg/ml

Source:

Mouse

Isotype:

IgG1

Immunogen Catalog Number:

AG26266

GenBank Accession Number:

NM_002417

GeneID (NCBI):

4288

UNIPROT ID:

P46013

Full Name:

antigen identified by monoclonal antibody Ki-67

Calculated MW:

359 kDa

Purification Method:

Protein G Magarose purification

CloneNo.:

2A1C7

Applications

Tested Applications:

Cytometric bead array, Indirect ELISA

Species Specificity:

Human

Background Information

Storage

Storage:

Store at -80°C.

Storage Buffer:

PBS Only

For technical support and original validation data for this product please contact:

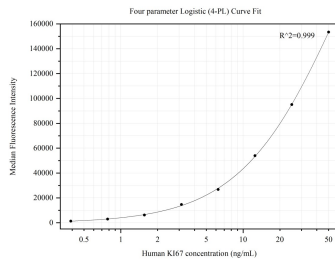
T: 4006900926

E: Proteintech-CN@ptglab.com

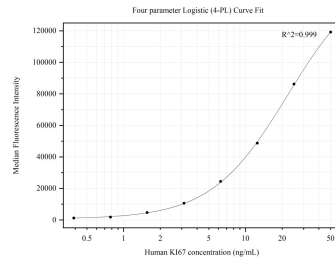
W: ptgcn.com

This product is exclusively available under Proteintech Group brand and is not available to purchase from any other manufacturer.

Selected Validation Data



Cytometric bead array standard curve of MP50237-1, Ki67 Monoclonal Matched Antibody Pair, PBS Only. Capture antibody: 66555-2-PBS. Detection antibody: 66555-3-PBS. Standard:Ag26266. Range: 0.391-50 ng/mL



Cytometric bead array standard curve of MP50237-2, Ki67 Monoclonal Matched Antibody Pair, PBS Only. Capture antibody: 66555-4-PBS. Detection antibody: 66555-3-PBS. Standard:Ag26266. Range: 0.391-50 ng/mL