

For Research Use Only

CD100 Monoclonal antibody, PBS Only (Capture/Detector)



Catalog Number: 66582-2-PBS

Basic Information

Catalog Number:

66582-2-PBS

Size:

1 mg/ml

Source:

Mouse

Isotype:

IgG1

Immunogen Catalog Number:

AG26461

GenBank Accession Number:

BC054500

GeneID (NCBI):

10507

UNIPROT ID:

Q92854

Full Name:

sema domain, immunoglobulin domain (Ig), transmembrane domain (TM) and short cytoplasmic domain, (semaphorin) 4D

Calculated MW:

96 kDa

Purification Method:

Protein G purification

CloneNo.:

1B3G8

Applications

Tested Applications:

Cytometric bead array, Indirect ELISA

Species Specificity:

human

Background Information

Storage

Storage:

Store at -80°C.

The product is shipped with ice packs. Upon receipt, store it immediately at -80°C

Storage Buffer:

PBS Only

For technical support and original validation data for this product please contact:

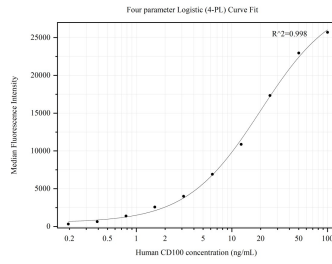
T: 4006900926

E: Proteintech-CN@ptglab.com

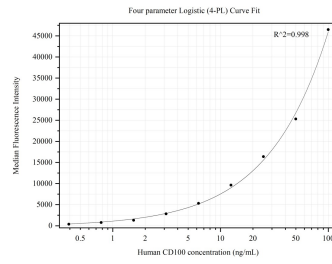
W: ptgcn.com

This product is exclusively available under Proteintech Group brand and is not available to purchase from any other manufacturer.

Selected Validation Data



Cytometric bead array standard curve of MP50276-1, CD100 Monoclonal Matched Antibody Pair, PBS Only. Capture antibody: 66582-2-PBS. Detection antibody: 66582-3-PBS. Standard: Ag26461. Range: 0.195-100 ng/mL.



Cytometric bead array standard curve of MP50276-2, CD100 Monoclonal Matched Antibody Pair, PBS Only. Capture antibody: 66582-4-PBS. Detection antibody: 66582-2-PBS. Standard: Ag26461. Range: 0.391-100 ng/mL.