

For Research Use Only

SDHA Monoclonal antibody, PBS Only (Capture/Detector)

Catalog Number: 66588-2-PBS



Basic Information

Catalog Number:

66588-2-PBS

Size:

1 mg/ml

Source:

Mouse

Isotype:

IgG1

Immunogen Catalog Number:

AG7023

GenBank Accession Number:

BC001380

GeneID (NCBI):

6389

UNIPROT ID:

P31040

Full Name:

succinate dehydrogenase complex,
subunit A, flavoprotein (Fp)

Calculated MW:

73 kDa

Purification Method:

Protein G Magarose purification

CloneNo.:

1C12C12

Applications

Tested Applications:

Cytometric bead array, Indirect ELISA

Species Specificity:

human

Background Information

Storage

Storage:

Store at -80°C.

The product is shipped with ice packs. Upon receipt, store it immediately at -80°C

Storage Buffer:

PBS Only

For technical support and original validation data for this product please contact:

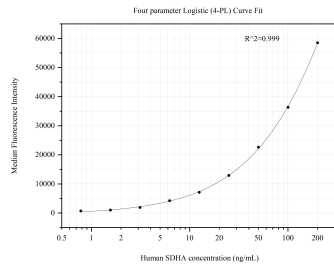
T: 4006900926

E: Proteintech-CN@ptglab.com

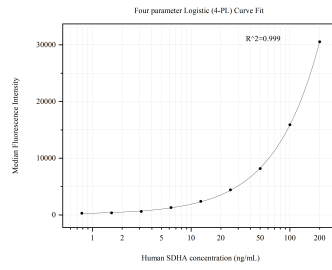
W: ptgcn.com

This product is exclusively available under Proteintech Group brand and is not available to purchase from any other manufacturer.

Selected Validation Data



Cytometric bead array standard curve of MP50790-1, SDHA Monoclonal Matched Antibody Pair, PBS Only. Capture antibody: 66588-1-PBS. Detection antibody: 66588-2-PBS. Standard:Ag7023. Range: 0.781-200 ng/mL.



Cytometric bead array standard curve of MP50790-4, SDHA Monoclonal Matched Antibody Pair, PBS Only. Capture antibody: 66588-2-PBS. Detection antibody: 66588-3-PBS. Standard:Ag7023. Range: 0.781-200 ng/mL.