

For Research Use Only

# ETS1 Monoclonal antibody, PBS Only

Catalog Number: 66598-1-PBS

Featured Product

1 Publications



## Basic Information

Catalog Number:

66598-1-PBS

Concentration:

1000 µg/ml

Source:

Mouse

Isotype:

IgG2b

Immunogen Catalog Number:

AG2127

GenBank Accession Number:

BC017314

GeneID (NCBI):

2113

UNIPROT ID:

P14921

Full Name:

v-ets erythroblastosis virus E26  
oncogene homolog 1 (avian)

Calculated MW:

441 aa, 50 kDa

Observed MW:

50 kDa

Purification Method:

Protein A purification

CloneNo.:

4F2D4

## Applications

Tested Applications:

WB, IHC, IF/ICC, Indirect ELISA

Cited Applications:

WB

Species Specificity:

human, rat

Cited Species:

human

## Background Information

ETS1 is a member of the ETS family of transcription factors, which are defined by the presence of a conserved ETS DNA-binding domain that recognizes the core consensus DNA sequence GGAA/T in target genes. ETS1 is a nuclear protein and primarily acts as a transcriptional activator, though it can also repress gene transcription. Since it is primarily expressed in lymphocytes, it plays several critical roles in immunity. In addition, it is important for angiogenesis. Since cells express several Ets proteins at the same time, functional redundancy is possible. This is particularly shown for the so-called housekeeping genes where several Ets factors were found to occupy the proximal promoters in vivo.

## Notable Publications

Author	Pubmed ID	Journal	Application
Lu Yang	39475379	Elife	WB

## Storage

Storage:

Store at -80°C.

The product is shipped with ice packs. Upon receipt, store it immediately at -80°C

Storage Buffer:

PBS Only

For technical support and original validation data for this product please contact:

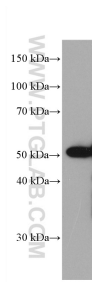
T: 4006900926

E: Proteintech-CN@ptglab.com

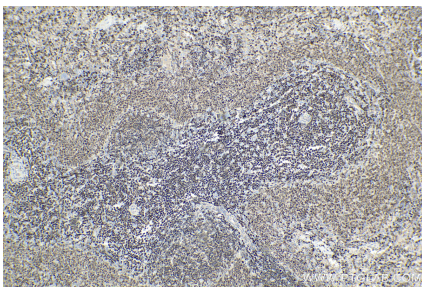
W: ptgcn.com

This product is exclusively available under Proteintech Group brand and is not available to purchase from any other manufacturer.

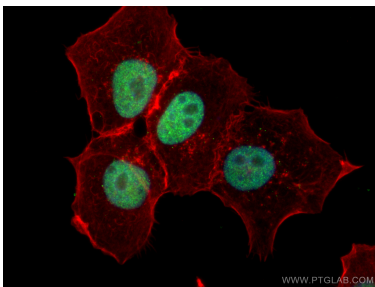
## Selected Validation Data



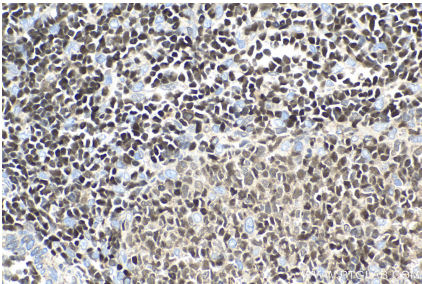
HepG2 cells were subjected to SDS PAGE followed by western blot with 66598-1-Ig (ETS1 antibody) at dilution of 1:5000 incubated at room temperature for 1.5 hours. This data was developed using the same antibody clone with 66598-1-PBS in a different storage buffer formulation.



Immunohistochemical analysis of paraffin-embedded rat spleen tissue slide using 66598-1-Ig (ETS1 antibody) at dilution of 1:2000 (under 10x lens). Heat mediated antigen retrieval with Tris-EDTA buffer (pH 9.0). This data was developed using the same antibody clone with 66598-1-PBS in a different storage buffer formulation.



Immunofluorescent analysis of (4% PFA) fixed A431 cells using ETS1 antibody (66598-1-Ig, Clone: 4F2D4 ) at dilution of 1:800 and CoraLite®488-Conjugated AffiniPure Goat Anti-Mouse IgG(H+L), CL594-Phalloidin (red). This data was developed using the same antibody clone with 66598-1-PBS in a different storage buffer formulation.



Immunohistochemical analysis of paraffin-embedded rat spleen tissue slide using 66598-1-Ig (ETS1 antibody) at dilution of 1:2000 (under 40x lens). Heat mediated antigen retrieval with Tris-EDTA buffer (pH 9.0). This data was developed using the same antibody clone with 66598-1-PBS in a different storage buffer formulation.