

For Research Use Only

# C5 Monoclonal antibody

Catalog Number: 66634-1-Ig **3 Publications**



## Basic Information

Catalog Number:

66634-1-Ig

Size:

1400 µg/ml

Source:

Mouse

Isotype:

IgG2a

Immunogen Catalog Number:

AG17882

GenBank Accession Number:

BC113740

GeneID (NCBI):

727

UNIPROT ID:

P01031

Full Name:

complement component 5

Calculated MW:

1676 aa, 188 kDa

Observed MW:

115 kDa

Purification Method:

Protein A purification

CloneNo.:

2G8C9

Recommended Dilutions:

WB 1:5000-1:50000

IF 1:200-1:800

## Applications

Tested Applications:

WB, IF/ICC, ELISA

Cited Applications:

WB, ELISA

Species Specificity:

Human

Cited Species:

human

Positive Controls:

WB : human plasma tissue,

IF : HepG2 cells,

## Background Information

### Notable Publications

| Author              | Pubmed ID | Journal             | Application |
|---------------------|-----------|---------------------|-------------|
| Anne Kathrin Wessig | 35296708  | Sci Rep             | WB          |
| Sipeng Li           | 34265469  | Mol Cell Proteomics | WB          |
| Simin Deng          | 38170683  | Virulence           | ELISA       |

## Storage

Storage:

Store at -20°C. Stable for one year after shipment.

Storage Buffer:

PBS with 0.02% sodium azide and 50% glycerol pH 7.3.

Aliquoting is unnecessary for -20°C storage

For technical support and original validation data for this product please contact:

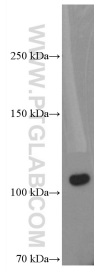
T: 4006900926

E: Proteintech-CN@ptglab.com

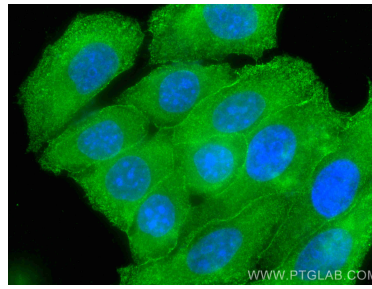
W: ptgcn.com

This product is exclusively available under Proteintech Group brand and is not available to purchase from any other manufacturer.

## Selected Validation Data



human plasma were subjected to SDS PAGE followed by western blot with 66634-1-Ig (C5 antibody) at dilution of 1:10000 incubated at room temperature for 1.5 hours.



Immunofluorescent analysis of (-20°C Methanol) fixed HepG2 cells using C5 antibody (66634-1-Ig, Clone: 2G8C9) at dilution of 1:400 and CoraLite®488-Conjugated AffiniPure Goat Anti-Mouse IgG(H+L).