

FIS1 Monoclonal antibody

Catalog Number: 66635-1-Ig

12 Publications

Basic Information

Catalog Number:

66635-1-Ig

Size:

1200 µg/ml

Source:

Mouse

Isotype:

IgG1

Immunogen Catalog Number:

AG1409

GenBank Accession Number:

BC009428

GeneID (NCBI):

51024

UNIPROT ID:

Q9Y3D6

Full Name:

fission 1 (mitochondrial outer membrane) homolog (S. cerevisiae)

Calculated MW:

17 kDa

Observed MW:

15 kDa

Purification Method:

Protein G purification

CloneNo.:

2F10E1

Recommended Dilutions:

WB 1:2000-1:10000

IHC 1:250-1:1000

IF 1:50-1:500

Applications

Tested Applications:

IF/ICC, IHC, WB, ELISA

Cited Applications:

IF, IHC, WB

Species Specificity:

Human

Cited Species:

human, goat, rat, mouse, fish

Note-IHC: suggested antigen retrieval with TE buffer pH 9.0; (*) Alternatively, antigen retrieval may be performed with citrate buffer pH 6.0

Positive Controls:

WB : HEK-293 cells, LNCaP cells, HeLa cells, MCF-7 cells, Jurkat cells, HepG2 cells, K-562 cells

IHC : human breast cancer tissue, human prostate cancer tissue, human ovary tumor tissue

IF : HepG2 cells,

Background Information

Fis1 (fission 1) is an integral mitochondrial outer membrane protein that participates in mitochondrial fission by interacting with dynamin-related protein 1 (Drp1). Excessive mitochondrial fission is associated with the pathology of a number of neurodegenerative or neurodevelopmental diseases. Increased expression of Fis1 has been found in Huntington's disease (HD)-affected brain, Alzheimer's disease (AD) patients, and autism spectrum disorder. (21257639, 21459773, 23333625)

Notable Publications

Author	Pubmed ID	Journal	Application
YUE LI	34470980	Biol Pharm Bull	IF
Xiao-Lin Jiang	36309912	Aging (Albany NY)	WB
Yujie Zhong	36501024	Nutrients	WB

Storage

Storage:

Store at -20°C. Stable for one year after shipment.

Storage Buffer:

PBS with 0.02% sodium azide and 50% glycerol pH 7.3.

Aliquoting is unnecessary for -20°C storage

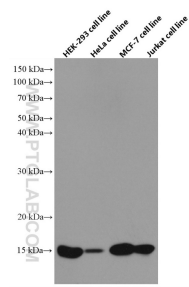
For technical support and original validation data for this product please contact:

T: 4006900926

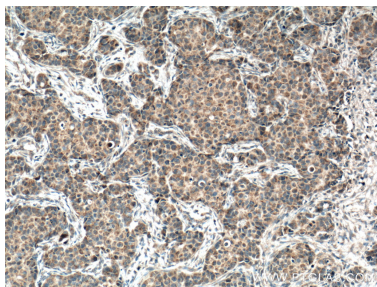
E: Proteintech-CN@ptglab.comW: ptgcn.com

This product is exclusively available under Proteintech Group brand and is not available to purchase from any other manufacturer.

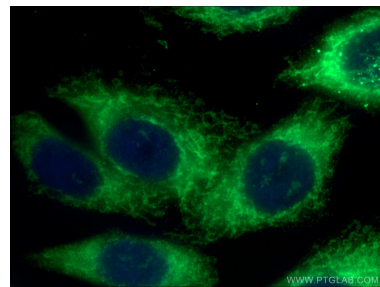
Selected Validation Data



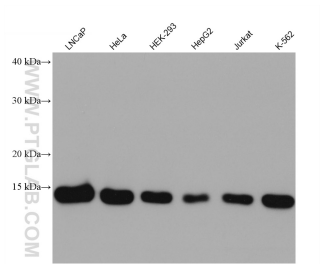
Various cells were subjected to SDS PAGE followed by western blot with 66635-1-Ig (FIS1 antibody) at dilution of 1:5000 incubated at room temperature for 1.5 hours.



Immunohistochemical analysis of paraffin-embedded human breast cancer tissue slide using 66635-1-Ig (FIS1 antibody) at dilution of 1:500 (under 10x lens. Heat mediated antigen retrieval with Tris-EDTA buffer (pH 9.0).



Immunofluorescent analysis of (4% PFA) fixed HepG2 cells using 66635-1-Ig (FIS1 antibody) at dilution of 1:100 and Alexa Fluor 488-Conjugated AffiniPure Goat Anti-Rabbit IgG(H+L).



Various lysates were subjected to SDS PAGE followed by western blot with 66635-1-Ig (FIS1 antibody) at dilution of 1:10000 incubated at room temperature for 1.5 hours.