

For Research Use Only

ANGPTL8/Betatrophin Monoclonal antibody



Catalog Number: 66641-1-Ig

1 Publications

Basic Information

Catalog Number:

66641-1-Ig

Size:

1500 µg/ml

Source:

Mouse

Isotype:

IgG1

Immunogen Catalog Number:

AG20708

GenBank Accession Number:

BC146552

GeneID (NCBI):

55908

UNIPROT ID:

Q6UXH0

Full Name:

hepatocellular carcinoma-associated gene TD26

Calculated MW:

251 aa, 28 kDa

Observed MW:

22 kDa

Purification Method:

Protein A purification

CloneNo.:

2H9F9

Recommended Dilutions:

WB 1:1000-1:8000

IHC 1:200-1:800

IF 1:200-1:800

Applications

Tested Applications:

IF-P, IHC, WB, ELISA

Cited Applications:

WB

Species Specificity:

Human

Cited Species:

human

Note-IHC: suggested antigen retrieval with TE buffer pH 9.0; (*) Alternatively, antigen retrieval may be performed with citrate buffer pH 6.0

Positive Controls:

WB : human adipose tissue,

IHC : human liver tissue, human liver cancer tissue

IF : human liver tissue,

Background Information

Notable Publications

Author	Pubmed ID	Journal	Application
Shuoshuo Li	33555034	Br J Pharmacol	WB

Storage

Storage:

Store at -20°C. Stable for one year after shipment.

Storage Buffer:

PBS with 0.02% sodium azide and 50% glycerol pH 7.3.

Aliquoting is unnecessary for -20°C storage

For technical support and original validation data for this product please contact:

T: 4006900926

E: Proteintech-CN@ptglab.com

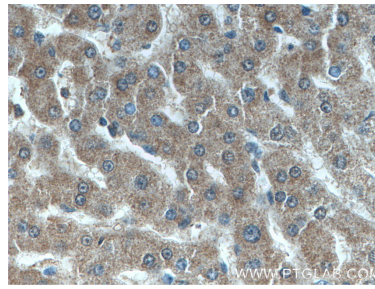
W: ptgcn.com

This product is exclusively available under Proteintech Group brand and is not available to purchase from any other manufacturer.

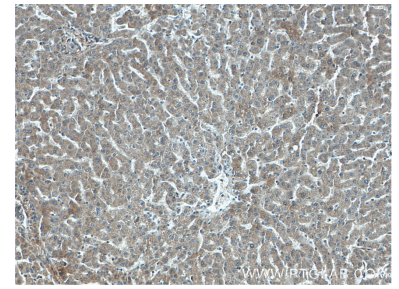
Selected Validation Data



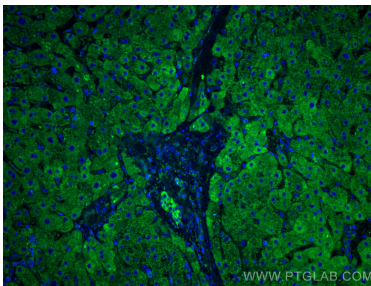
human adipose tissue were subjected to SDS PAGE followed by western blot with 66641-1-Ig (ANGPTL8/Betatrophin antibody) at dilution of 1:4000 incubated at room temperature for 1.5 hours.



Immunohistochemical analysis of paraffin-embedded human liver tissue slide using 66641-1-Ig (ANGPTL8/Betatrophin antibody) at dilution of 1:400 (under 40x lens).



Immunohistochemical analysis of paraffin-embedded human liver tissue slide using 66641-1-Ig (ANGPTL8/Betatrophin antibody) at dilution of 1:400 (under 10x lens).



Immunofluorescent analysis of (4% PFA) fixed human liver tissue using ANGPTL8/Betatrophin antibody (66641-1-Ig, Clone: 2H9F9) at dilution of 1:400 and CoraLite®488-Conjugated AffiniPure Goat Anti-Mouse IgG(H+L).