

For Research Use Only

XRCC2 Monoclonal antibody, PBS Only



Catalog Number: 66652-1-PBS

Basic Information

Catalog Number:

66652-1-PBS

Size:

1 mg/ml

Source:

Mouse

Isotype:

IgG2b

Immunogen Catalog Number:

AG14421

GenBank Accession Number:

BC042137

GeneID (NCBI):

7516

UNIPROT ID:

O43543

Full Name:

X-ray repair complementing defective repair in Chinese hamster cells 2

Calculated MW:

280 aa, 32 kDa

Observed MW:

32 kDa

Purification Method:

Protein A purification

CloneNo.:

3D9A1

Applications

Tested Applications:

WB, IF, ELISA

Species Specificity:

Human, mouse

Background Information

XRCC2, also named as DNA repair protein XRCC2, is a 280 amino acid protein, which belongs to the RecA family. XRCC2 is involved in the homologous recombination repair (HRR) pathway of double-stranded DNA, thought to repair chromosomal fragmentation, translocations and deletions. XRCC2 is a part of the Rad21 paralog protein complex BCDX2 which acts in the BRCA1-BRCA2-dependent HR pathway.

Storage

Storage:

Store at -80°C.

Storage Buffer:

PBS only

For technical support and original validation data for this product please contact:

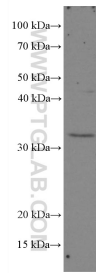
T: 4006900926

E: Proteintech-CN@ptglab.com

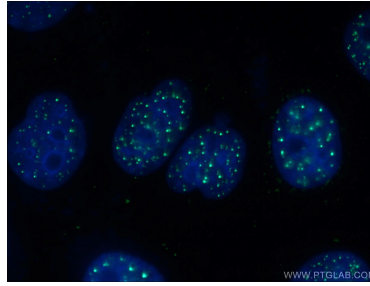
W: ptgcn.com

This product is exclusively available under Proteintech Group brand and is not available to purchase from any other manufacturer.

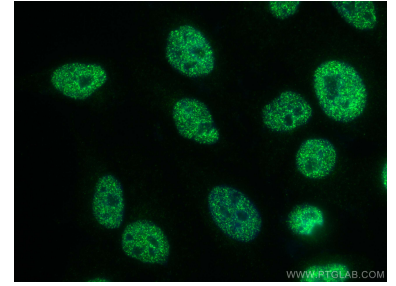
Selected Validation Data



HEK-293 cells were subjected to SDS PAGE followed by western blot with 66652-1-Ig (XRC2 antibody) at dilution of 1:2000 incubated at room temperature for 1.5 hours. This data was developed using the same antibody clone with 66652-1-PBS in a different storage buffer formulation.



Immunofluorescent analysis of (-20°C Ethanol) fixed HepG2 cells using 66652-1-Ig (XRC2 antibody) at dilution of 1:100 and Alexa Fluor 488-Conjugated AffiniPure Goat Anti-Mouse IgG(H+L). This data was developed using the same antibody clone with 66652-1-PBS in a different storage buffer formulation.



Immunofluorescent analysis of (4% PFA) fixed HepG2 cells using XRC2 antibody (66652-1-Ig, Clone: 3D9A1) at dilution of 1:400 and CoraLite®488-Conjugated AffiniPure Goat Anti-Mouse IgG(H+L). This data was developed using the same antibody clone with 66652-1-PBS in a different storage buffer formulation.