

For Research Use Only

EIF4E Monoclonal antibody, PBS Only



Catalog Number: 66655-1-PBS

Featured Product

Basic Information

Catalog Number:

66655-1-PBS

Size:

1 mg/ml

Source:

Mouse

Isotype:

IgG1

Immunogen Catalog Number:

AG27191

GenBank Accession Number:

BC012611

GeneID (NCBI):

1977

UNIPROT ID:

P06730

Full Name:

eukaryotic translation initiation

factor 4E

Calculated MW:

29 kDa

Observed MW:

26-29 kDa

Purification Method:

Protein A purification

CloneNo.:

3C6B9

Applications

Tested Applications:

WB,IHC,IF,FC,ELISA

Species Specificity:

Human, mouse, rat

Background Information

Eukaryotic translation initiation factor 4E, also known as eIF4E, is a protein that in humans is encoded by the EIF4E gene. eIF4E is the mRNA cap-binding protein, known as a general initiation factor allowing for mRNA-ribosome interaction and cap-dependent translation in eukaryotic cells. eIF4E is a polypeptide that exists as both a free form and as part of the eIF4F pre-initiation complex. Regulation of eIF4E may be achieved via three distinct mechanisms: transcription, phosphorylation, and inhibitory proteins.

Storage

Storage:

Store at -20°C. Stable for one year after shipment.

Storage Buffer:

PBS only

Aliquoting is unnecessary for -20°C storage

For technical support and original validation data for this product please contact:

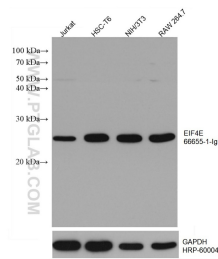
T: 4006900926

E: Proteintech-CN@ptglab.com

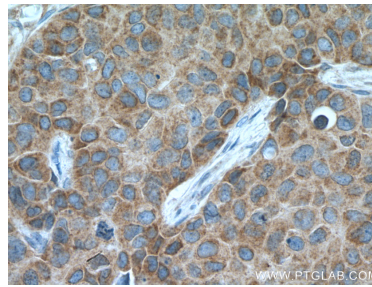
W: ptgcn.com

This product is exclusively available under Proteintech Group brand and is not available to purchase from any other manufacturer.

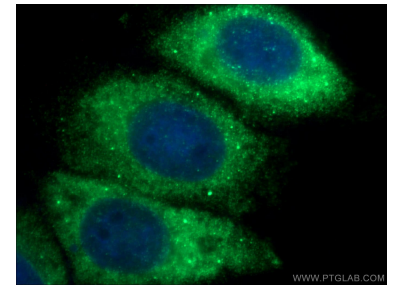
Selected Validation Data



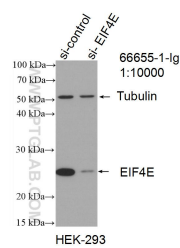
Various lysates were subjected to SDS PAGE followed by western blot with 66655-1-Ig (EIF4E antibody) at dilution of 1:20000 incubated at room temperature for 1.5 hours. The membrane was stripped and reblotted with HRP-conjugated GAPDH Monoclonal antibody (HRP-60004) as loading control. This data was developed using the same antibody clone with 66655-1-PBS in a different storage buffer formulation.



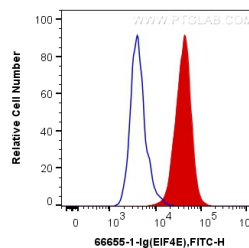
Immunohistochemical analysis of paraffin-embedded human breast cancer tissue slide using 66655-1-Ig (EIF4E antibody) at dilution of 1:5000 (under 40x lens. Heat mediated antigen retrieval with Tris-EDTA buffer (pH 9.0). This data was developed using the same antibody clone with 66655-1-PBS in a different storage buffer formulation.



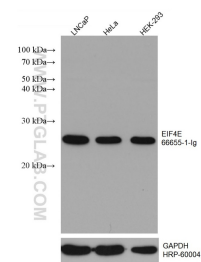
Immunofluorescent analysis of (-20°C Ethanol) fixed HepG2 cells using 66655-1-Ig (EIF4E antibody) at dilution of 1:100 and Alexa Fluor 488-Conjugated AffiniPure Goat Anti-Mouse IgG(H+L). This data was developed using the same antibody clone with 66655-1-PBS in a different storage buffer formulation.



WB result of EIF4E antibody (66655-1-Ig; 1:10000; incubated at room temperature for 1.5 hours) with sh-Control and sh-EIF4E transfected HEK-293 cells. This data was developed using the same antibody clone with 66655-1-PBS in a different storage buffer formulation.



1X10⁶ HepG2 cells were intracellularly stained with 0.2 ug Anti-Human EIF4E (66655-1-Ig, Clone:3C6B9) and CoraLite@488-Conjugated AffiniPure Goat Anti-Mouse IgG(H+L) at dilution 1:1000 (red), or 0.2 ug Control Antibody. Cells were fixed with 4% PFA and permeabilized with Flow Cytometry Perm Buffer (PF00011-C). This data was developed using the same antibody clone with 66655-1-PBS in a different storage buffer formulation.



Various lysates were subjected to SDS PAGE followed by western blot with 66655-1-Ig (EIF4E antibody) at dilution of 1:20000 incubated at room temperature for 1.5 hours. The membrane was stripped and reblotted with HRP-conjugated GAPDH Monoclonal antibody (HRP-60004) as loading control. This data was developed using the same antibody clone with 66655-1-PBS in a different storage buffer formulation.