

For Research Use Only

# MLKL Monoclonal antibody, PBS Only



Catalog Number: 66675-1-PBS

Featured Product

## Basic Information

Catalog Number:

66675-1-PBS

Size:

1 mg/ml

Source:

Mouse

Isotype:

IgG1

Immunogen Catalog Number:

AG15188

GenBank Accession Number:

BC028141

GeneID (NCBI):

197259

UNIPROT ID:

Q8NB16

Full Name:

mixed lineage kinase domain-like

Calculated MW:

471 aa, 54 kDa

Observed MW:

35-40kDa, 50-55 kDa

Purification Method:

Protein A purification

CloneNo.:

3D4C6

## Applications

Tested Applications:

WB,IHC,IF,ELISA

Species Specificity:

Human, Mouse

## Background Information

Mixed lineage kinase domain like pseudokinase (MLKL), belongs to the protein kinase superfamily, has two MW of 54 and 30 kDa. MLKL plays a critical role in tumor necrosis factor (TNF)-induced necroptosis, a programmed cell death process, via interaction with receptor-interacting protein 3 (RIP3), which is a key signaling molecule in necroptosis pathway. High levels of this protein and RIP3 are associated with inflammatory bowel disease in children. 66675-1-Ig antibody recognizes 54 kDa MLKL monomer, 216 kDa MLKL tetramer and a band around 45-50 kDa which are similar to papers published. (PMID: 31848291). MLKL can be detected a 35kDa truncated isoform (PMID: 35965541).

## Storage

Storage:

Store at -80°C.

Storage Buffer:

PBS only

For technical support and original validation data for this product please contact:

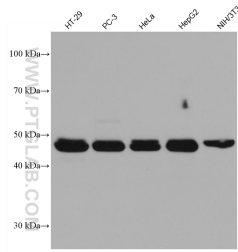
T: 4006900926

E: [Proteintech-CN@ptglab.com](mailto:Proteintech-CN@ptglab.com)

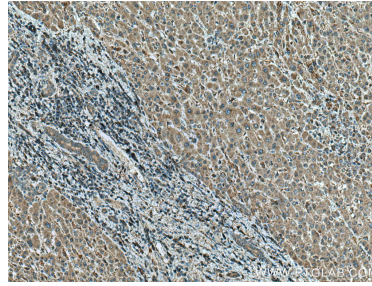
W: [ptgcn.com](http://ptgcn.com)

This product is exclusively available under Proteintech Group brand and is not available to purchase from any other manufacturer.

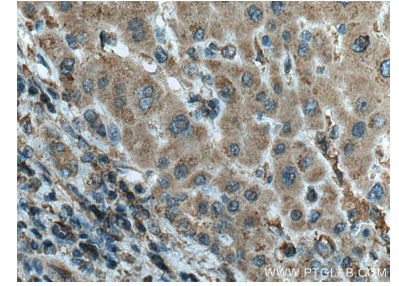
## Selected Validation Data



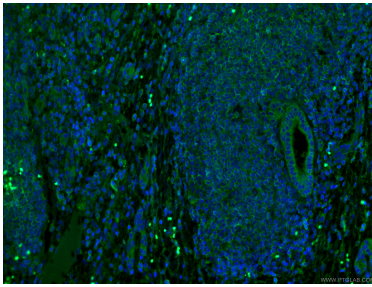
Various lysates were subjected to SDS PAGE followed by western blot with 66675-1-Ig (MLKL antibody) at dilution of 1:10000 incubated at room temperature for 1.5 hours. This data was developed using the same antibody clone with 66675-1-PBS in a different storage buffer formulation.



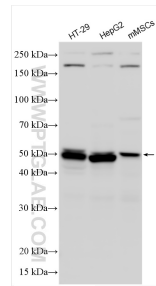
Immunohistochemical analysis of paraffin-embedded human liver cancer tissue slide using 66675-1-Ig (MLKL antibody) at dilution of 1:1000 (under 10x lens). Heat mediated antigen retrieval with Tris-EDTA buffer (pH 9.0). This data was developed using the same antibody clone with 66675-1-PBS in a different storage buffer formulation.



Immunohistochemical analysis of paraffin-embedded human liver cancer tissue slide using 66675-1-Ig (MLKL antibody) at dilution of 1:1000 (under 40x lens). Heat mediated antigen retrieval with Tris-EDTA buffer (pH 9.0). This data was developed using the same antibody clone with 66675-1-PBS in a different storage buffer formulation.



Immunofluorescent analysis of (4% PFA) fixed human liver cancer tissue using 66675-1-Ig (MLKL antibody) at dilution of 1:100 and CoraLite488-Conjugated AffiniPure Goat Anti-Mouse IgG(H+L). This data was developed using the same antibody clone with 66675-1-PBS in a different storage buffer formulation.



Various lysates were subjected to SDS PAGE followed by western blot with 66675-1-Ig (MLKL antibody) at dilution of 1:8000 incubated at room temperature for 1.5 hours. This data was developed using the same antibody clone with 66675-1-PBS in a different storage buffer formulation.