

For Research Use Only

ASGR1 Monoclonal antibody, PBS Only



Catalog Number: 66692-1-PBS

Featured Product

Basic Information

Catalog Number:

66692-1-PBS

Size:

1 mg/ml

Source:

Mouse

Isotype:

IgG1

Immunogen Catalog Number:

AG2310

GenBank Accession Number:

BC032130

GeneID (NCBI):

432

UNIPROT ID:

P07306

Full Name:

asialoglycoprotein receptor 1

Calculated MW:

291 aa, 33 kDa

Observed MW:

42-46 kDa

Purification Method:

Protein G purification

CloneNo.:

1G5F5

Applications

Tested Applications:

WB, Indirect ELISA, IHC, IF

Species Specificity:

Human, Mouse, Pig, rat

Background Information

Asialoglycoprotein receptor (ASGPR), also known as the hepatic galactose/N-acetylglucosamine (GlcNAc) receptor or Ashwell receptor, is a C-type lectin expressed exclusively in hepatic parenchymal cells. ASGPR consists of two subunits, a major subunit (ASGR1, HL-1) and a minor subunit (ASGR2, HL-2), and specifically recognizes terminal β -linked galactose or GlcNAc on circulating glycoproteins or cells. This receptor plays a critical role in serum glycoprotein homeostasis by mediating the endocytosis and lysosomal degradation of glycoproteins that contain terminal galactose or GlcNAc residues. ASGPR may facilitate hepatic infection by multiple viruses including hepatitis B, and is also a target for liver-specific drug delivery.

Storage

Storage:

Store at -80°C.

Storage Buffer:

PBS Only

For technical support and original validation data for this product please contact:

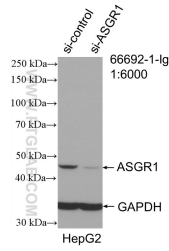
T: 4006900926

E: Proteintech-CN@ptglab.com

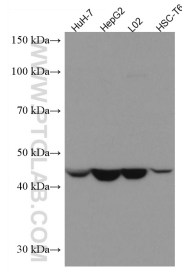
W: ptgcn.com

This product is exclusively available under Proteintech Group brand and is not available to purchase from any other manufacturer.

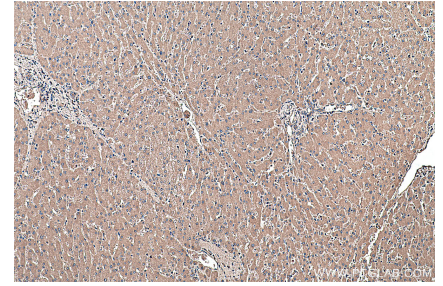
Selected Validation Data



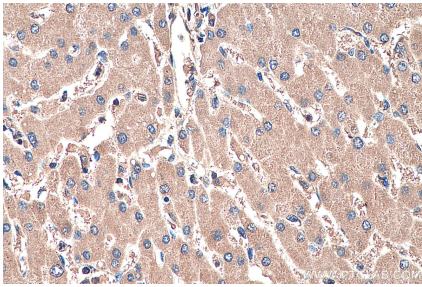
WB result of ASGR1 antibody (66692-1-Ig; 1:6000; incubated at room temperature for 1.5 hours) with sh-Control and sh-ASGR1 transfected HepG2 cells. This data was developed using the same antibody clone with 66692-1-PBS in a different storage buffer formulation.



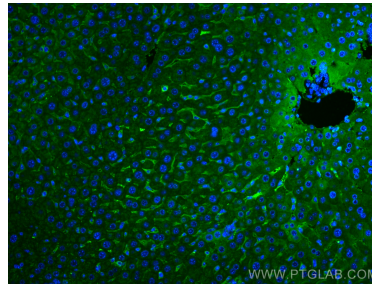
Various lysates were subjected to SDS PAGE followed by western blot with 66692-1-Ig (ASGR1 antibody) at dilution of 1:5000 incubated at room temperature for 1.5 hours. This data was developed using the same antibody clone with 66692-1-PBS in a different storage buffer formulation.



Immunohistochemical analysis of paraffin-embedded human liver tissue slide using 66692-1-Ig (ASGR1 antibody) at dilution of 1:1000 (under 10x lens). Heat mediated antigen retrieval with Tris-EDTA buffer (pH 9.0). This data was developed using the same antibody clone with 66692-1-PBS in a different storage buffer formulation.



Immunohistochemical analysis of paraffin-embedded human liver tissue slide using 66692-1-Ig (ASGR1 antibody) at dilution of 1:1000 (under 40x lens). Heat mediated antigen retrieval with Tris-EDTA buffer (pH 9.0). This data was developed using the same antibody clone with 66692-1-PBS in a different storage buffer formulation.



Immunofluorescent analysis of (4% PFA) fixed mouse liver tissue using ASGR1 antibody (66692-1-Ig, Clone: 1G5F5) at dilution of 1:400 and CoralLite® 488-Conjugated AffiniPure Goat Anti-Mouse IgG(H+L). This data was developed using the same antibody clone with 66692-1-PBS in a different storage buffer formulation.