

For Research Use Only

CD21 Monoclonal antibody, PBS Only



Catalog Number: 66701-1-PBS

Basic Information

Catalog Number: 66701-1-PBS	GenBank Accession Number: BC136394	Purification Method: Protein A purification
Size: 1 mg/ml	GeneID (NCBI): 1380	CloneNo.: 1D9A3
Source: Mouse	ENSEMBL Gene ID: ENSG00000117322	
Isotype: IgG2a	UNIPROT ID: P20023	
Immunogen Catalog Number: AG18058	Full Name: complement component (3d/Epstein Barr virus) receptor 2	
	Calculated MW: 1092 aa, 119 kDa	
	Observed MW: 150 kDa	

Applications

Tested Applications:
WB, Indirect ELISA

Species Specificity:
Human

Background Information

CD21, also known as complement receptor type 2 (CR2), complement C3d receptor, and Epstein-Barr virus receptor, is a transmembrane protein that contains a small cytoplasmic domain, a transmembrane region and an extracellular domain consisting of 15 tandem short consensus repeat sequences (PMID: 6230668; 2551147). It is expressed on B cells, follicular dendritic cells, thymocytes and a subset of peripheral T cells (PMID: 26119182). CD21 binds complement fragments C3d, C3dg and iC3b and acts as a receptor for the Epstein-Barr virus (PMID: 7753047). On B cells, together with CD19 and CD81, CD21 forms a complex that functions as a co-receptor to the BCR (PMID: 7542009). It is involved in B cells activation and functions.

Storage

Storage:
Store at -80°C.

Storage Buffer:
PBS Only

For technical support and original validation data for this product please contact:

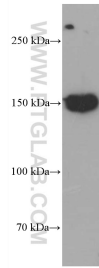
T: 4006900926

E: Proteintech-CN@ptglab.com

W: ptgcn.com

This product is exclusively available under Proteintech Group brand and is not available to purchase from any other manufacturer.

Selected Validation Data



human spleen tissue were subjected to SDS PAGE followed by western blot with 66701-1-Ig (CD21 antibody) at dilution of 1:5000 incubated at room temperature for 1.5 hours. This data was developed using the same antibody clone with 66701-1-PBS in a different storage buffer formulation.