

For Research Use Only

TPT1 Monoclonal antibody, PBS Only



Catalog Number: 66713-1-PBS

Featured Product

Basic Information

Catalog Number:

66713-1-PBS

Size:

1 mg/ml

Source:

Mouse

Isotype:

IgG1

Immunogen Catalog Number:

AG27651

GenBank Accession Number:

BC003352

GeneID (NCBI):

7178

UNIPROT ID:

P13693

Full Name:

tumor protein, translationally-controlled 1

Calculated MW:

22 kDa

Observed MW:

22 kDa

Purification Method:

Protein G purification

CloneNo.:

1G6A10

Applications

Tested Applications:

WB, Indirect ELISA, IHC, IF

Species Specificity:

Human, Mouse, Rat

Background Information

The translationally controlled tumor protein (TPT1, also known as TCTP) is a highly conserved, abundantly expressed protein associated with cell growth and apoptosis regulation. It is overexpressed in most tumor cells and its down-regulation decreases the viability of those cells. This antibody detected 22 kDa TPT1 in lysates.

Storage

Storage:

Store at -80°C.

Storage Buffer:

PBS Only

For technical support and original validation data for this product please contact:

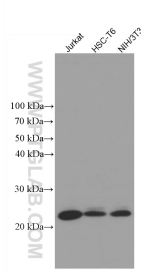
T: 4006900926

E: Proteintech-CN@ptglab.com

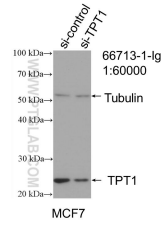
W: ptgcn.com

This product is exclusively available under Proteintech Group brand and is not available to purchase from any other manufacturer.

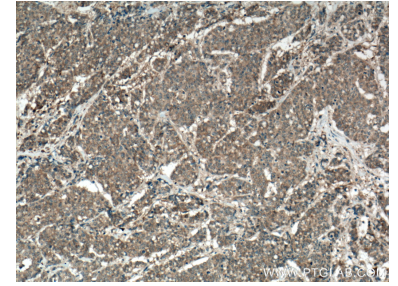
Selected Validation Data



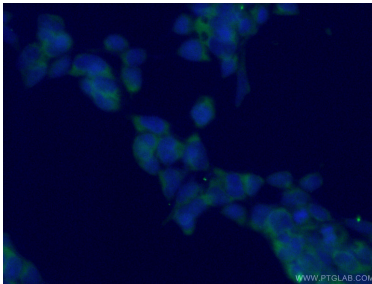
Various lysates were subjected to SDS PAGE followed by western blot with 66713-1-Ig (TPT1 antibody) at dilution of 1:10000 incubated at room temperature for 1.5 hours. This data was developed using the same antibody clone with 66713-1-PBS in a different storage buffer formulation.



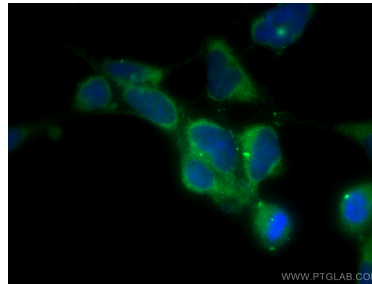
WB result of TPT1 antibody (66713-1-Ig; 1:60000; incubated at room temperature for 1.5 hours) with sh-Control and sh-TPT1 transfected MCF-7 cells. This data was developed using the same antibody clone with 66713-1-PBS in a different storage buffer formulation.



Immunohistochemical analysis of paraffin-embedded human colon cancer tissue slide using 66713-1-Ig (TPT1 antibody) at dilution of 1:1000 (under 10x lens. Heat mediated antigen retrieval with Tris-EDTA buffer (pH 9.0). This data was developed using the same antibody clone with 66713-1-PBS in a different storage buffer formulation.



Immunofluorescent analysis of (-20°C Ethanol) fixed HEK-293 cells using 66713-1-Ig (TPT1 antibody) at dilution of 1:100 and Alexa Fluor 488-Conjugated AffiniPure Goat Anti-Mouse IgG(H+L). This data was developed using the same antibody clone with 66713-1-PBS in a different storage buffer formulation.



Immunofluorescent analysis of (-20°C Methanol) fixed HEK-293 cells using TPT1 antibody (66713-1-Ig, Clone: 1G6A10) at dilution of 1:400 and CoralLite® 488-Conjugated AffiniPure Goat Anti-Mouse IgG(H+L). This data was developed using the same antibody clone with 66713-1-PBS in a different storage buffer formulation.