

For Research Use Only

IL-1 Beta Monoclonal antibody, PBS Only (Detector)



Catalog Number: 66737-1-PBS

Featured Product

Basic Information

Catalog Number:

66737-1-PBS

Size:

1mg/ml

Source:

Mouse

Isotype:

IgG1

Immunogen Catalog Number:

AG26030

GenBank Accession Number:

BC008678

GeneID (NCBI):

3553

ENSEMBL Gene ID:

ENSG00000125538

UNIPROT ID:

P01584

Full Name:

interleukin 1, beta

Calculated MW:

269 aa, 31 kDa

Observed MW:

35 kDa

Purification Method:

Protein A purification

CloneNo.:

2A1B4

Applications

Tested Applications:

WB, FC, IHC, Sandwich ELISA, Indirect ELISA

Species Specificity:

Human

Background Information

Interleukin-1 is a pro-inflammatory cytokine with multiple biological effects. The IL-1 gene family encodes three proteins: IL-1 α , IL-1 β and their naturally occurring inhibitor IL-1RN. IL-1 Beta (IL-1 β), mainly produced by blood monocytes and tissue macrophages, has been implicated in mediating both acute and chronic inflammation. IL-1 β is known to be involved in a variety of cellular activities, including cell proliferation, differentiation and apoptosis. IL-1 β is emerging as a key mediator of carcinogenesis that characterizes host-environment interactions. Human IL-1 β is synthesized as a 31 kDa precursor. To gain activity, the precursor must be cleaved by caspase-1 between Asp116 and Ala117 to yield a 17 kDa mature form.

Storage

Storage:

Store at -20°C. Stable for one year after shipment.

Storage Buffer:

PBS only

Aliquoting is unnecessary for -20°C storage

For technical support and original validation data for this product please contact:

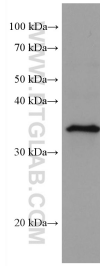
T: 4006900926

E: Proteintech-CN@ptglab.com

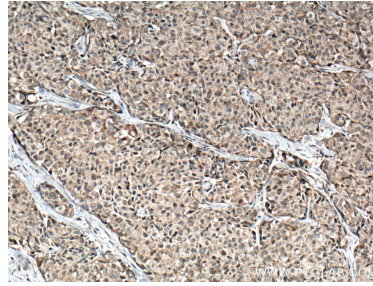
W: ptgcn.com

This product is exclusively available under Proteintech Group brand and is not available to purchase from any other manufacturer.

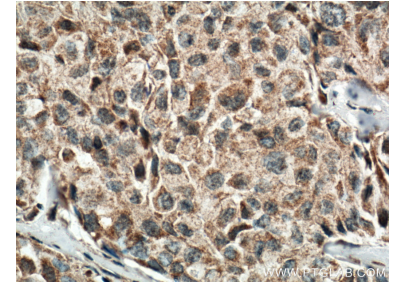
Selected Validation Data



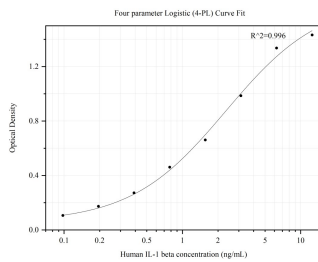
A431 cells were subjected to SDS PAGE followed by western blot with 66737-1-Ig (IL-1 Beta antibody) at dilution of 1:4000 incubated at room temperature for 1.5 hours. This data was developed using the same antibody clone with 66737-1-PBS in a different storage buffer formulation.



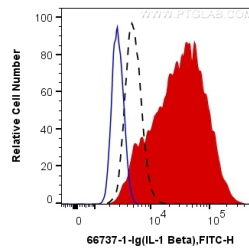
Immunohistochemical analysis of paraffin-embedded human lung cancer tissue slide using 66737-1-Ig (IL1 beta antibody) at dilution of 1:200 (under 10x lens. Heat mediated antigen retrieval with Tris-EDTA buffer (pH 9.0). This data was developed using the same antibody clone with 66737-1-PBS in a different storage buffer formulation.



Immunohistochemical analysis of paraffin-embedded human lung cancer tissue slide using 66737-1-Ig (IL1 beta antibody) at dilution of 1:200 (under 40x lens. Heat mediated antigen retrieval with Tris-EDTA buffer (pH 9.0). This data was developed using the same antibody clone with 66737-1-PBS in a different storage buffer formulation.



Sandwich ELISA standard curve of MP80001-6, IL-1 beta Hybrid Matched Antibody Pair, PBS Only. Capture antibody: 82696-8-RR. Detection antibody: HRP-conjugated 66737-1-PBS. Standard:HZ-1164. Range: 0.098-12.5 ng/mL.



1X10⁶ THP-1 cells untreated (dashed lines), LPS treated (red) were intracellularly stained with 0.4 ug Anti-Human IL-1 Beta (66737-1-Ig, Clone:2A1B4) and CoraLite®488-Conjugated AffiniPure Goat Anti-Mouse IgG(H+L) at dilution 1:1000, or 0.4 ug Control Antibody (blue). Cells were fixed with 4% PFA and permeabilized with Flow Cytometry Perm Buffer (PF00011-C). This data was developed using the same antibody clone with 66737-1-PBS in a different storage buffer formulation.