

For Research Use Only

# Collagen Type I Monoclonal antibody, PBS Only



Catalog Number: 66761-1-PBS

## Basic Information

Catalog Number:

66761-1-PBS

Size:

1 mg/ml

Source:

Mouse

Isotype:

IgG1

Immunogen Catalog Number:

AG6281

GenBank Accession Number:

BC054498

GeneID (NCBI):

1278

UNIPROT ID:

P08123

Full Name:

collagen, type I, alpha 2

Calculated MW:

1366 aa, 130 kDa

Observed MW:

140 kDa, 70-80 kDa

Purification Method:

Protein G purification

CloneNo.:

3D5E8

## Applications

Tested Applications:

WB, Indirect ELISA

Species Specificity:

Human, pig, mouse, rat

## Background Information

Type I collagen, the major structural component of connective tissues such as skin, tendon and bone, is the most abundant and widely expressed collagen in humans (PMID: 7620364; 8645190; 9016532). Type I collagen is a heterotrimer comprising one alpha 2(I) and two alpha 1(I) chains which are encoded by the unlinked loci COL1A2 and COL1A1 respectively. Type I collagen has a molecular mass of about 250-300 kDa, while the alpha 2(I) chain has a molecular weight of about 100-140 kDa. Mutations in COL1A2 gene are associated with osteogenesis imperfecta, Ehlers-Danlos syndrome, idiopathic osteoporosis, and atypical Marfan syndrome.

## Storage

Storage:

Store at -80°C.

Storage Buffer:

PBS Only

For technical support and original validation data for this product please contact:

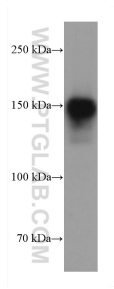
T: 4006900926

E: [Proteintech-CN@ptglab.com](mailto:Proteintech-CN@ptglab.com)

W: [ptgcn.com](http://ptgcn.com)

**This product is exclusively available under Proteintech Group brand and is not available to purchase from any other manufacturer.**

## Selected Validation Data



rat skin tissue were subjected to SDS PAGE followed by western blot with 66761-1-Ig (Collagen Type I antibody) at dilution of 1:5000 incubated at room temperature for 1.5 hours. This data was developed using the same antibody clone with 66761-1-PBS in a different storage buffer formulation.