

PYGL Monoclonal antibody

Catalog Number: 66769-1-Ig

Featured Product

Basic Information

Catalog Number:

66769-1-Ig

Size:

1400 µg/ml

Source:

Mouse

Isotype:

IgG1

Immunogen Catalog Number:

AG8550

GenBank Accession Number:

BC009895

GeneID (NCBI):

5836

UNIPROT ID:

P06737

Full Name:

phosphorylase, glycogen, liver

Calculated MW:

846 aa, 97 kDa

Observed MW:

97 kDa

Purification Method:

Protein G purification

CloneNo.:

1G12D8

Recommended Dilutions:

WB 1:2000-1:10000

Applications

Tested Applications:

WB, ELISA

Species Specificity:

Human, rat

Positive Controls:

WB : HSC-T6 cells, HeLa cells, HepG2 cells, L02 cells, SMMC-7721 cells

Background Information

Glycogen phosphorylase L (PYGL) is one of the gene related to hypoxia metabolism and was found to be up-regulated in head and neck squamous cell carcinomas (HNSCCs) and breast cancers. Glycogen synthases (GSs) and glycogen phosphorylases (GPs) catalyze the key steps of glycogen synthesis and breakdown, while glycogen phosphorylase has three isoforms: PYGM (muscle), PYGL (liver), and PYGB (brain) (PMID: 37063425, 9529348). High PYGL expression plays an independent role in predicting the poor prognosis of glioma patients (PMID: 34177761).

Storage

Storage:

Store at -20°C. Stable for one year after shipment.

Storage Buffer:

PBS with 0.02% sodium azide and 50% glycerol pH 7.3.

Aliquoting is unnecessary for -20°C storage

For technical support and original validation data for this product please contact:

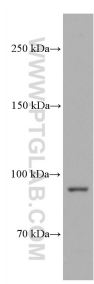
T: 4006900926

E: Proteintech-CN@ptglab.com

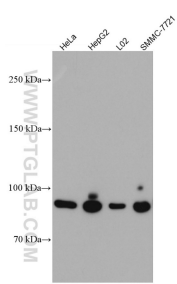
W: ptgcn.com

This product is exclusively available under Proteintech Group brand and is not available to purchase from any other manufacturer.

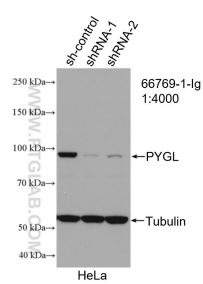
Selected Validation Data



HSC-T6 cells were subjected to SDS PAGE followed by western blot with 66769-1-Ig (PYGL antibody) at dilution of 1:5000 incubated at room temperature for 1.5 hours.



Various lysates were subjected to SDS PAGE followed by western blot with 66769-1-Ig (PYGL antibody) at dilution of 1:5000 incubated at room temperature for 1.5 hours.



WB result of PYGL antibody (66769-1-Ig; 1:4000; incubated at room temperature for 1.5 hours) with sh-Control and sh-PYGL transfected HeLa cells.