

For Research Use Only

# PYGL Monoclonal antibody, PBS Only



Catalog Number: 66769-1-PBS

Featured Product

## Basic Information

Catalog Number:

66769-1-PBS

Size:

1 mg/ml

Source:

Mouse

Isotype:

IgG1

Immunogen Catalog Number:

AG8550

GenBank Accession Number:

BC009895

GeneID (NCBI):

5836

UNIPROT ID:

P06737

Full Name:

phosphorylase, glycogen, liver

Calculated MW:

846 aa, 97 kDa

Observed MW:

97 kDa

Purification Method:

Protein G purification

CloneNo.:

1G12D8

## Applications

Tested Applications:

WB, Indirect ELISA

Species Specificity:

Human, rat

## Background Information

Glycogen phosphorylase L (PYGL) is one of the genes related to hypoxia metabolism and was found to be up-regulated in head and neck squamous cell carcinomas (HNSCCs) and breast cancers. Glycogen synthases (GSs) and glycogen phosphorylases (GPs) catalyze the key steps of glycogen synthesis and breakdown, while glycogen phosphorylase has three isoforms: PYGM (muscle), PYGL (liver), and PYGB (brain) (PMID: 37063425, 9529348). High PYGL expression plays an independent role in predicting the poor prognosis of glioma patients (PMID: 34177761).

## Storage

Storage:

Store at -80°C.

Storage Buffer:

PBS Only

For technical support and original validation data for this product please contact:

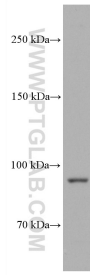
T: 4006900926

E: [Proteintech-CN@ptglab.com](mailto:Proteintech-CN@ptglab.com)

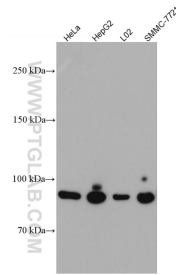
W: [ptgcn.com](http://ptgcn.com)

This product is exclusively available under Proteintech Group brand and is not available to purchase from any other manufacturer.

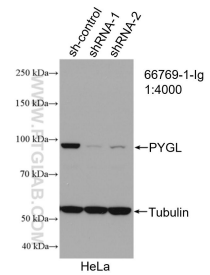
## Selected Validation Data



HSC-T6 cells were subjected to SDS PAGE followed by western blot with 66769-1-Ig (PYGL antibody) at dilution of 1:5000 incubated at room temperature for 1.5 hours. This data was developed using the same antibody clone with 66769-1-PBS in a different storage buffer formulation.



Various lysates were subjected to SDS PAGE followed by western blot with 66769-1-Ig (PYGL antibody) at dilution of 1:5000 incubated at room temperature for 1.5 hours. This data was developed using the same antibody clone with 66769-1-PBS in a different storage buffer formulation.



WB result of PYGL antibody (66769-1-Ig; 1:4000; incubated at room temperature for 1.5 hours) with sh-Control and sh-PYGL transfected HeLa cells. This data was developed using the same antibody clone with 66769-1-PBS in a different storage buffer formulation.