

For Research Use Only

SLC25A1 Monoclonal antibody, PBS Only



Catalog Number: 66771-1-PBS

Basic Information

Catalog Number: 66771-1-PBS	GenBank Accession Number: BC004980	Purification Method: Protein A purification
Size: 1 mg/ml	GeneID (NCBI): 6576	CloneNo.: 1F11A3
Source: Mouse	UNIPROT ID: P53007	
Isotype: IgG3	Full Name: solute carrier family 25 (mitochondrial carrier; citrate transporter), member 1	
Immunogen Catalog Number: AG7520	Calculated MW: 34 kDa	
	Observed MW: 34 kDa	

Applications

Tested Applications:
WB, Indirect ELISA

Species Specificity:
Human, Mouse, Rat

Background Information

SLC25A1, also known as CIC or CTP, is a mitochondrial citrate transporter that exports citrate from the mitochondria to the cytosol. SLC25A1 is highly expressed in several tumor types. Recently it has been identified as a novel transcriptional target of mutant p53 and a negative tumor prognostic marker. In addition, defects in SLC25A1 has been found as a cause of combined D-2- and L-2-hydroxyglutaric aciduria. This antibody specifically recognized the endogenous SLC25A1; no protein was detected in cells from subjects containing two alleles with truncating mutations with this antibody. (24681808, 23561848)

Storage

Storage:
Store at -80°C.

The product is shipped with ice packs. Upon receipt, store it immediately at -80°C

Storage Buffer:
PBS Only

For technical support and original validation data for this product please contact:

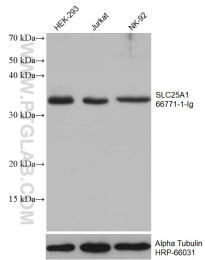
T: 4006900926

E: Proteintech-CN@ptglab.com

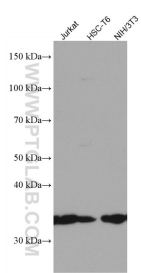
W: ptgcn.com

This product is exclusively available under Proteintech Group brand and is not available to purchase from any other manufacturer.

Selected Validation Data



Various lysates were subjected to SDS PAGE followed by western blot with 66771-1-Ig (SLC25A1 antibody) at dilution of 1:10000 incubated at room temperature for 1.5 hours. The membrane was stripped and reblotted with HRP-conjugated Alpha Tubulin Monoclonal antibody (HRP-66031) as loading control. This data was developed using the same antibody clone with 66771-1-PBS in a different storage buffer formulation.



Various lysates were subjected to SDS PAGE followed by western blot with 66771-1-Ig (SLC25A1 antibody) at dilution of 1:3000 incubated at room temperature for 1.5 hours. This data was developed using the same antibody clone with 66771-1-PBS in a different storage buffer formulation.