

For Research Use Only

# TOM20 Monoclonal antibody

Catalog Number: 66777-1-Ig **23 Publications**



## Basic Information

**Catalog Number:**

66777-1-Ig

**Size:**

1000 µg/ml

**Source:**

Mouse

**Isotype:**

IgG2b

**Immunogen Catalog Number:**

AG2378

**GenBank Accession Number:**

BC000882

**GeneID (NCBI):**

9804

**UNIPROT ID:**

Q15388

**Full Name:**

translocase of outer mitochondrial membrane 20 homolog (yeast)

**Calculated MW:**

145 aa, 16 kDa

**Observed MW:**

16 kDa

**Purification Method:**

Protein A purification

**CloneNo.:**

1D6F5

**Recommended Dilutions:**

WB 1:1000-1:5000

IHC 1:500-1:2000

IF 1:400-1:1600

## Applications

**Tested Applications:**

FC, IF/ICC, IHC, WB, ELISA

**Cited Applications:**

WB, IHC, IF

**Species Specificity:**

Human

**Cited Species:**

human, bovine

**Note-IHC: suggested antigen retrieval with TE buffer pH 9.0; (\*) Alternatively, antigen retrieval may be performed with citrate buffer pH 6.0**

**Positive Controls:**

**WB:** HeLa cells, HEK-293 cells, HepG2 cells, Jurkat cells, THP-1 cells, K-562 cells

**IHC:** human liver cancer tissue, human breast cancer tissue

**IF:** HepG2 cells,

## Background Information

TOM20, also named as KIAA0016, belongs to the Tom20 family. It is a central component of the receptor complex responsible for the recognition and translocation of cytosolically synthesized mitochondrial preproteins. Together with TOM22, TOM20 functions as the transit peptide receptor at the surface of the mitochondrion outer membrane and facilitates the movement of preproteins into the TOM40 translocation pore. TOM20 is characterized as major docking receptors to mediate the recognition by different mechanisms.

## Notable Publications

Author	Pubmed ID	Journal	Application
Lu Lu	36183875	Environ Pollut	IF
Ye Young Shin	34826168	J Pineal Res	IF
Fangli Peng	36374514	Invest Ophthalmol Vis Sci	IF

## Storage

**Storage:**

Store at -20°C. Stable for one year after shipment.

**Storage Buffer:**

PBS with 0.02% sodium azide and 50% glycerol pH 7.3.

Aliquoting is unnecessary for -20°C storage

For technical support and original validation data for this product please contact:

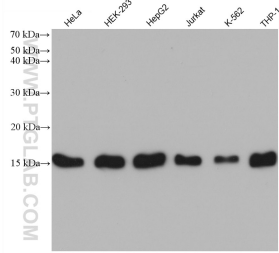
T: 4006900926

E: Proteintech-CN@ptglab.com

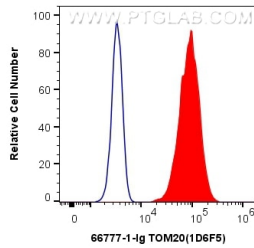
W: ptgcn.com

**This product is exclusively available under Proteintech Group brand and is not available to purchase from any other manufacturer.**

## Selected Validation Data



Various lysates were subjected to SDS PAGE followed by western blot with 66777-1-Ig (TOM20 antibody) at dilution of 1:5000 incubated at room temperature for 1.5 hours.



$1 \times 10^6$  HeLa cells were intracellularly stained with 0.4 ug Anti-Human TOM20 (66777-1-Ig, Clone:1D6F5) and CoraLite®488-Conjugated AffiniPure Goat Anti-Mouse IgG(H+L) at dilution 1:1000 (red), or 0.4 ug Control Antibody. Cells were fixed with 4% PFA and permeabilized with Flow Cytometry Perm Buffer (PF00011-C).



Immunohistochemical analysis of paraffin-embedded human liver cancer tissue slide using 66777-1-Ig (TOM20 antibody) at dilution of 1:1000 (under 10x lens). Heat mediated antigen retrieval with Tris-EDTA buffer (pH 9.0).



Immunofluorescent analysis of (4% PFA) fixed HepG2 cells using TOM20 antibody (66777-1-Ig, Clone: 1D6F5 ) at dilution of 1:800 and CoraLite®488-Conjugated AffiniPure Goat Anti-Mouse IgG(H+L), CL594-phalloidin (red).